

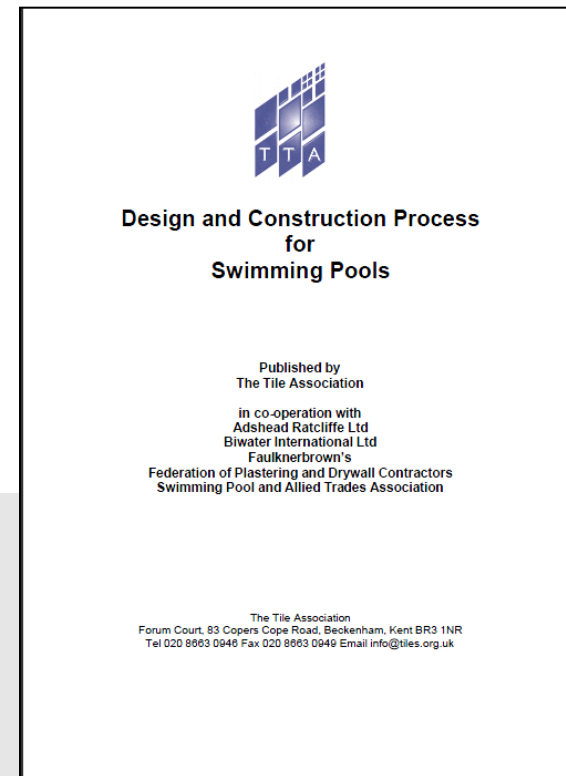
BAL Adhesives

Promote Best Practice Tile Installation



BAL provides you the system with a guarantee.

Promote Best Practice Tile Installation



BAL provides you with confidence to do your work.

A Guide To European Classifications for Adhesives

Category	Characteristics and Requirements
C1	Tensile strength to exceed 0.5N/mm ² after 20 minutes open time and after:
Normal Setting Cementitious Adhesive	<ul style="list-style-type: none"> ● 28 days under standard conditions (SC = 23°C + 50% RH) ● Water immersion - 7 days SC + 21 days water immersion ● Heat ageing - 14 days SC + 14 days at 70°C + 1 day at SC ● Freeze Thaw - 7 days SC + 21 days water immersion + 25 Freeze Thaw cycles (+15°C immersed in water to -15°C = 1 cycle) + 1 day SC
C2 Improved Cementitious Adhesive	<p>Tensile strength to exceed 0.5N/mm² after 20 minutes open time and 1.0N/mm² after:</p> <ul style="list-style-type: none"> ● 28 days under SC ● Water immersion - 7 days SC + 21 days water immersion ● Heat ageing - 14 days SC + 14 days cure at 70°C + 1 day at SC ● Freeze Thaw - 7 days SC + 21 days water immersion + 25 Freeze Thaw cycles + 1 day SC

The Europeans introduced a classification system to try to help the consumer and tradesman select products...used with the right understanding it can be helpful, however, as we'll show you it's a guide not the gospel!



A Guide To European Classifications for Adhesives

Cementitious Adhesives

C1 Standard	C2 Improved
-----------------------	-----------------------

F -	Fast setting
E -	Extended open time
T -	Slip resistance
S1 -	Deformable
S2 -	Highly deformable

Dispersion Adhesives

D1 Standard	D2 Improved
-----------------------	-----------------------

E -	Extended open time
T -	Slip resistance

Reaction Adhesives

R1 Standard	R2 Improved
-----------------------	-----------------------

T -	Slip resistance
------------	-----------------



Category	Characteristics and Requirements
<p>C1 Normal Setting Cementitious Adhesive</p>	<p>Tensile strength to exceed 0.5N/mm² after 20 minutes open time and after:</p> <ul style="list-style-type: none"> ● 28 days under standard conditions (SC = 23°C + 50% RH) ● Water immersion - 7 days SC + 21 days water immersion ● Heat ageing - 14 days SC + 14 days at 70°C + 1 day at SC ● Freeze Thaw - 7 days SC + 21 days water immersion + 25 Freeze Thaw cycles (+15°C immersed in water to -15°C = 1 cycle) + 1 day SC
<p>C2 Improved Cementitious Adhesive</p>	<p>Tensile strength to exceed 0.5N/mm² after 20 minutes open time and 1.0N/mm² after:</p> <ul style="list-style-type: none"> ● 28 days under SC ● Water immersion - 7 days SC + 21 days water immersion ● Heat ageing - 14 days SC + 14 days cure at 70°C + 1 day at SC ● Freeze Thaw - 7 days SC + 21 days water immersion + 25 Freeze Thaw cycles+ 1 day SC
Optional Characteristics	
<p>F Fast Setting</p>	<p>Tensile strength must be at least 0.5N/mm² after 6 hr under SC. Tensile strength to exceed 0.5N/mm² after 10 minutes open time.</p>
<p>E Extended Open Time</p>	<p>Tensile strength to exceed 0.5N/mm² after 30 minutes open time.</p>
<p>T Reduced slip (Walls)</p>	<p>Tile must slip less than or equal to 0.5mm after 20 minutes, using a 100mm x 100mm tile weighing 200g.</p>
<p>S Deformability</p>	<p>S1 = 2.5mm < 5mm – Deformable S2 = ≥ 5mm – Highly Deformable</p>



BAL single part fastflex C1S2

DESCRIPTION

Water/frost-resistant elastomeric
tile adhesive for floors & walls.



Key Features

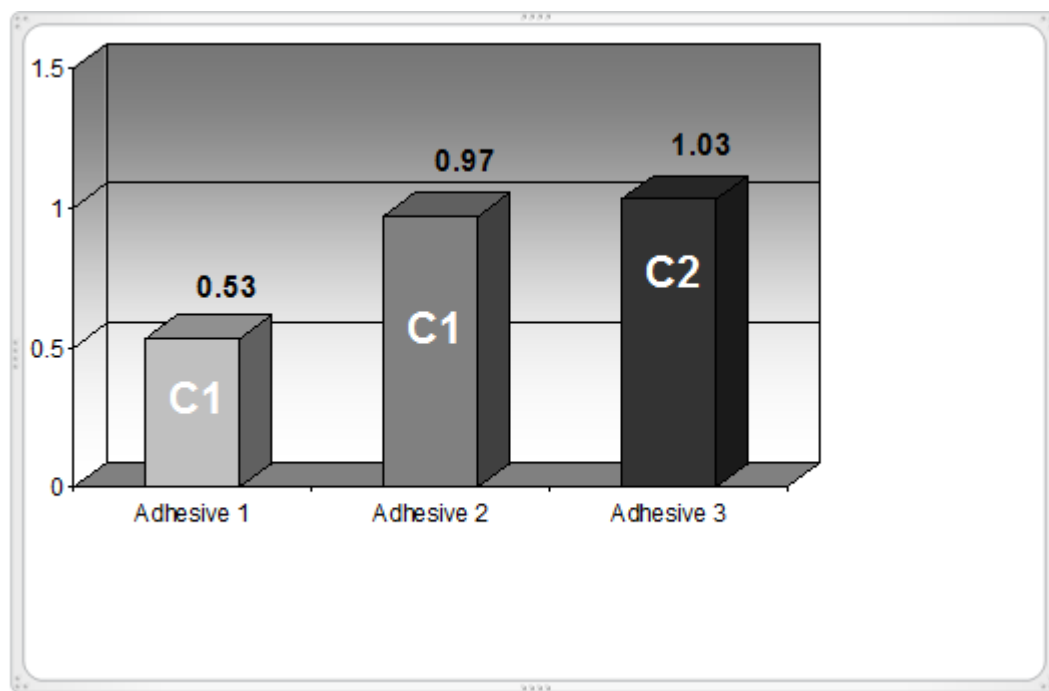
Rubber-like flexibility: Elastomeric.
Water/frost-resistant. Fast-setting.
Grout after: 5 hours (at 20°C)

Use for

- Fixing ceramics, porcelain and fully vitrified tiles, mosaics, and some natural stone and slate in dry or wet interior and exterior environments.
- **NOTE:** Certain types of natural stone (i.e. limestone, travertine and some granite) may be susceptible to water staining. In this case, use of **BAL single part fastflex white** adhesive is recommended.
- Recommended for areas subject to movement and vibration. Also as isolating, anti-fracture underlay for ceramic tiles.

While the standard is a useful guide, it shouldn't be used solely when comparing tile adhesives, an example...

N/mm⁻²



Other important factors not covered by the classification:

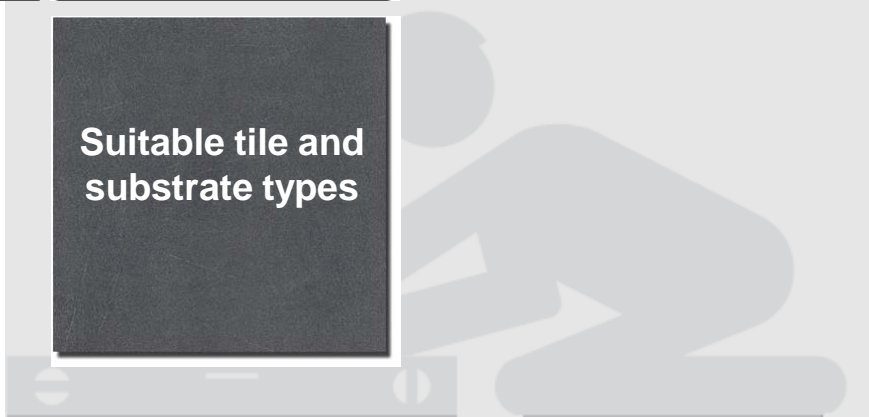
Ease of use

Coverage

Pot Life and
Adjustment
Time

Colour

Suitable tile and
substrate types

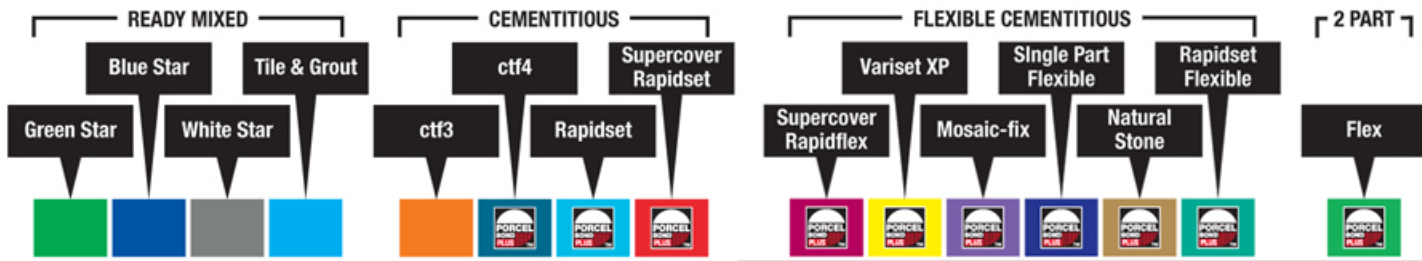
A faint, grey silhouette of a person kneeling on the floor, likely representing a construction worker or installer, is visible in the background behind the bottom-right box.

Product Selection

To select products REMEMBER there's always help in the BAL Product Selector Guide...which has easy reference tables.



wall tile adhesive selector (guide only, contact TAS for details)



READY MIXED				CEMENTITIOUS				FLEXIBLE CEMENTITIOUS						2 PART			
LOCATION												LOCATION					
Interior (dry)	□	□	□	□	□	□	□	□	□	□	□	□	□	□	□	□	Interior (dry)
Exterior	-	-	-	-	□	□	□	□	□	□	□	□	□	□	□	□	Exterior
ENVIRONMENTS												ENVIRONMENTS					
Intermittent wet*	□	□	□	□	□	□	□	□	□	□	□	□	□	□	□	□	Intermittent wet*
Power shower	-	-	□	□	□	□	□	□	□	□	□	□	□	□	□	□	Power shower
Communal shower	-	-	□	-	□	□	□	□	□	□	□	□	□	□	□	□	Communal shower
Swimming pool	-	-	-	-	▲	▲	▲	▲	□	□	□	□	□	□	□	□	Swimming pool
Minor vibration	-	-	□	□	▲	▲	▲	▲	□	□	□	□	□	□	□	□	Minor vibration
Limited deflection	-	-	-	-	-	-	-	-	-	-	-	-	-	-	-	□	Limited deflection
BACKGROUNDS												BACKGROUNDS					
Lightweight block	-	-	-	-	▲ & *	▲ & *	▲ & *	▲ & *	*	*	*	*	*	*	*	□	Lightweight block
Render, Standard brick/block	□	□	□	□	□	□	□	□	□	□	□	□	□	□	□	□	Render, Standard brick/block
Concrete, Dense brick/block	-	-	-	-	□	▲	▲	▲	□	□	□	□	□	□	□	□	Concrete, Dense brick/block
Plaster	□	□	□	□	*	*	*	*	*	*	*	*	*	*	*	□	Plaster
Plasterboard	□	□	□	□	▲ & *	▲ & *	▲ & *	▲ & *	*	*	*	*	*	*	*	□	Plasterboard
Tilebacker boards, Fibre Cement sheets	□	□	□	□	▲	▲	▲	▲	□	□	□	□	□	□	□	□	Tilebacker boards, Fibre Cement sheets
MDF Board	-	-	□	□	-	-	-	-	-	-	-	-	-	-	-	□	MDF Board
Existing Tiles: glazed ceramics	▶	▶	▶	▶	▲	▲	▲	▲	-	-	□	-	-	-	-	□	Existing Tiles: glazed ceramics
Existing Tiles: unglazed ceramics, Natural stone	□	□	□	□	□	□	□	□	□	□	□	□	□	□	□	□	Existing Tiles: unglazed ceramics, Natural stone
Plywood walls	-	-	□	□	▲	▲	▲	▲	-	-	□	-	-	-	-	□	Plywood walls
Lightweight Tilebacker boards	□	□	□	□	▲	▲	▲	▲	□	□	□	□	□	□	□	□	Lightweight Tilebacker boards

KEY
 □ = Suitable product ▲ = Use product with BAL AD1 (admixure) ● = Use product with BAL Bond SBR * = Use product with BAL Primer ▶ = Longer drying (min. 3 days)

*Kitchen/Bathroom/Domestic shower

Ready Mixed Adhesives



BAL Ready Mixed Adhesives



BAL green star

BAL blue star



BAL white star *plus*

BAL grip *plus*



Exclusive to
Topps Tiles

Everything you need in one bucket.

BAL Green Star

- EN12004 D1TE
- Competitively priced
- Domestic bathrooms
- Kitchens & showers
- Good open time
- Ceramic tiles up to 300mm
- Acrylic



Ideal for domestic wall application.

BAL Blue Star

- EN12004 D1T
- Internal commercial walls
- Domestic bathrooms
- Kitchens & showers
- Ceramic tiles up to 300mm
- Acrylic



Ideal for domestic & commercial wall applications.

BAL White Star *plus* & *BAL Grip plus*



Exclusive to
Topps Tiles

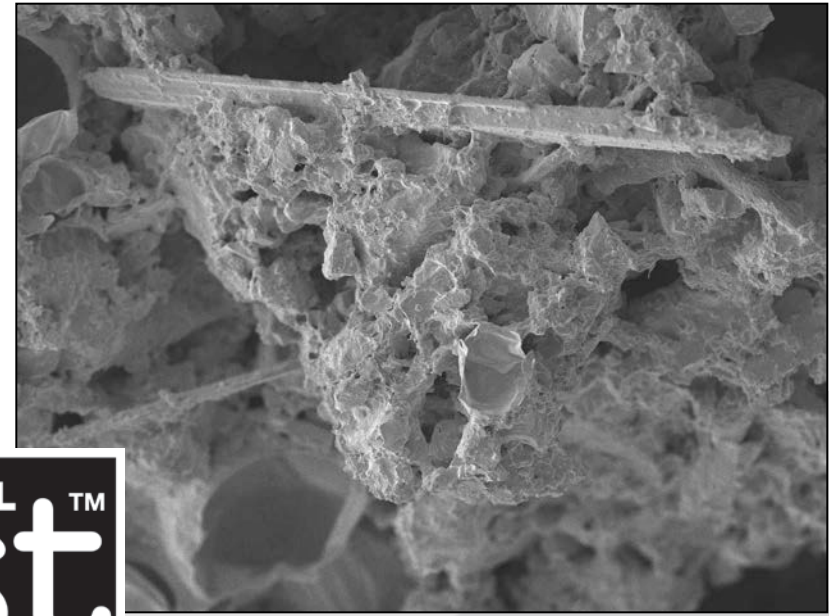
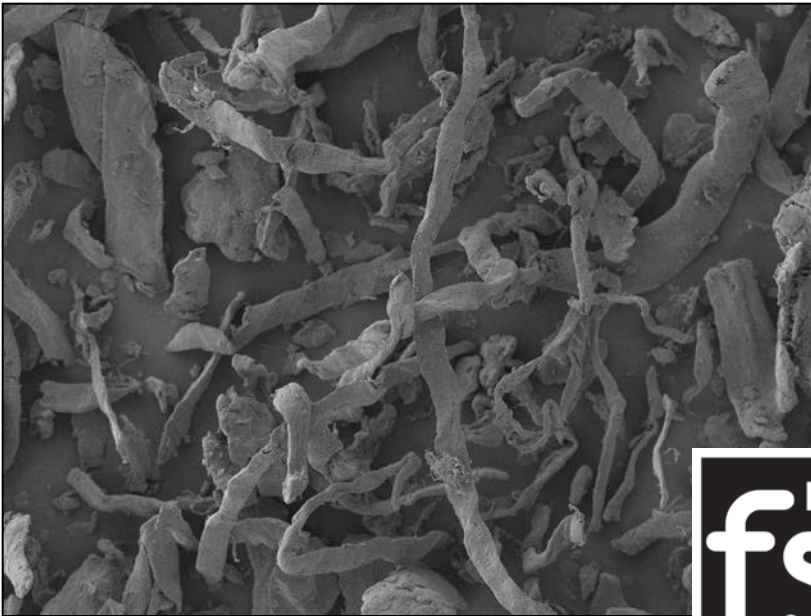


BAL White Star *plus* & BAL Grip *plus*



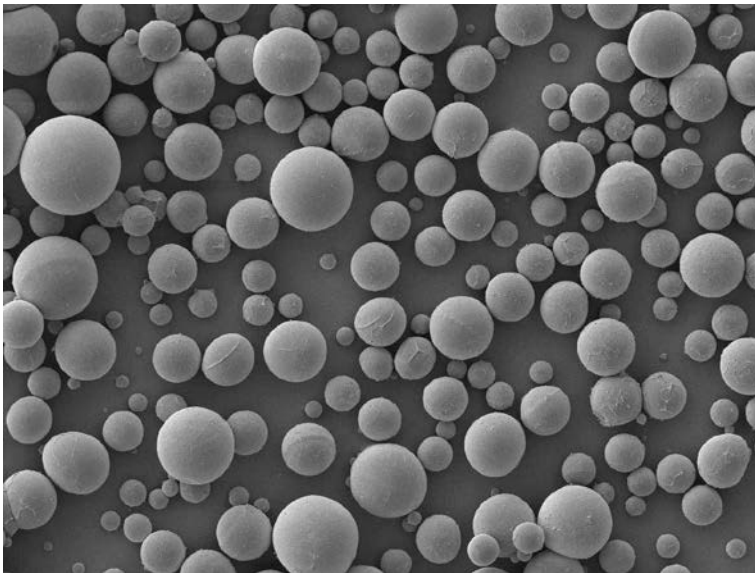
Brighter, whiter for application of glass and mosaic tiles.

BAL White Star *plus* & BAL Grip *plus*

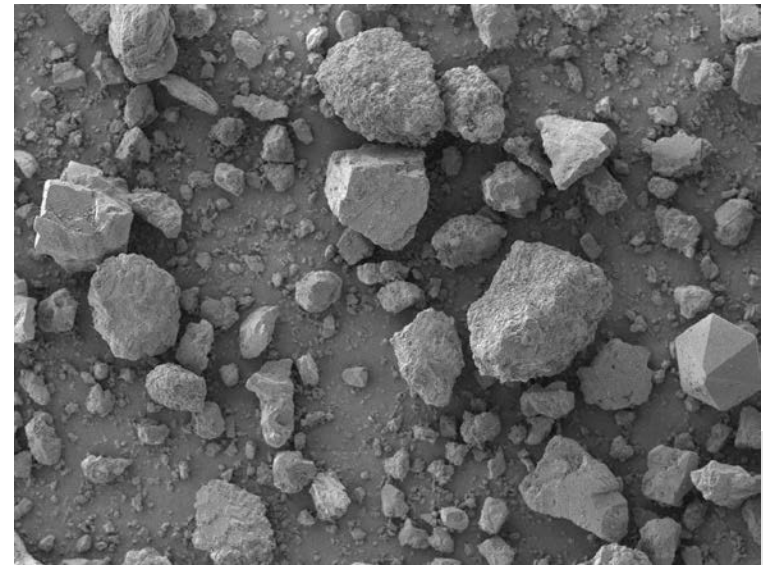


Fibres improves adhesion strength and open times.

BAL White Star *plus* & BAL Grip *plus*



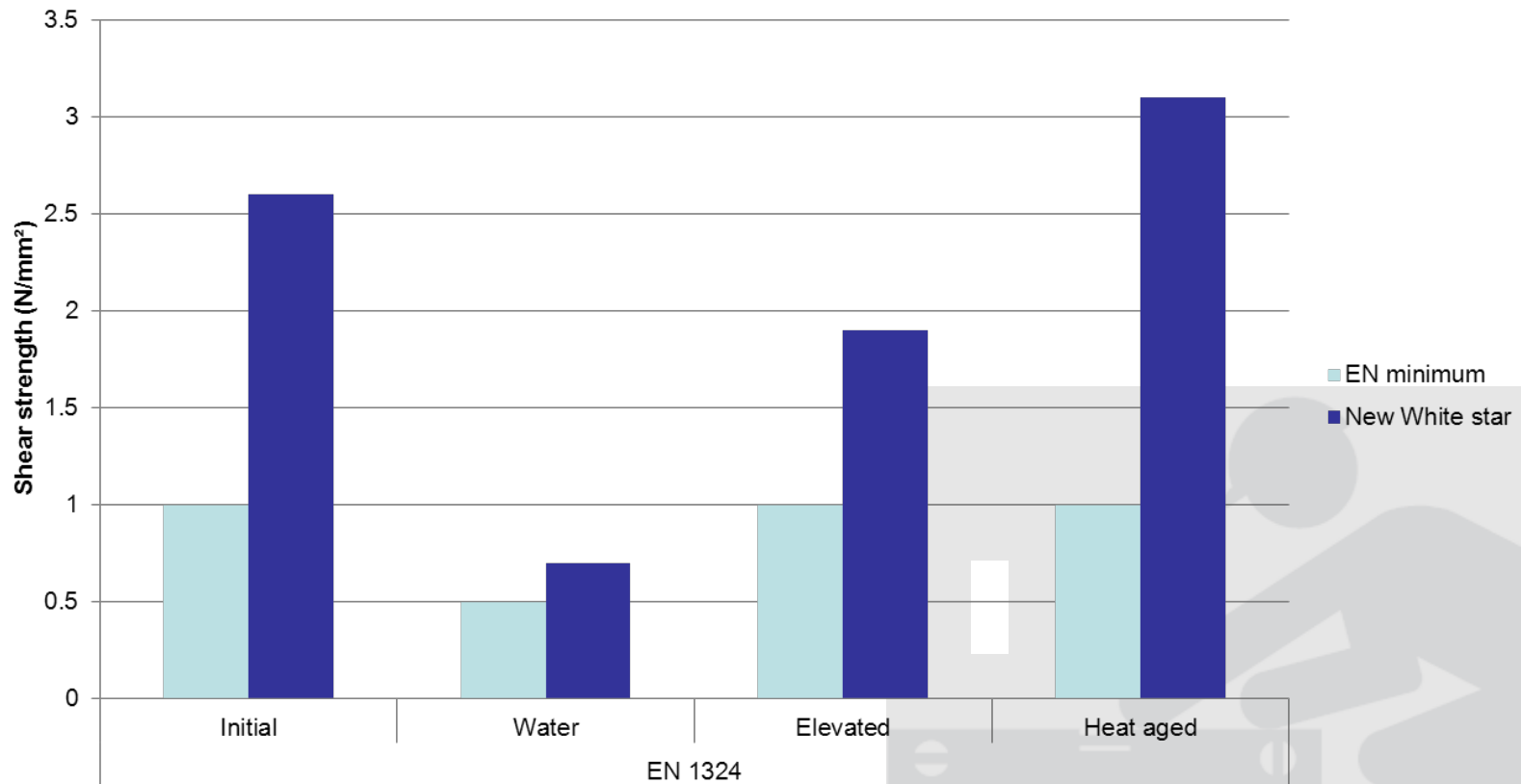
Lightweight filler



Conventional filler

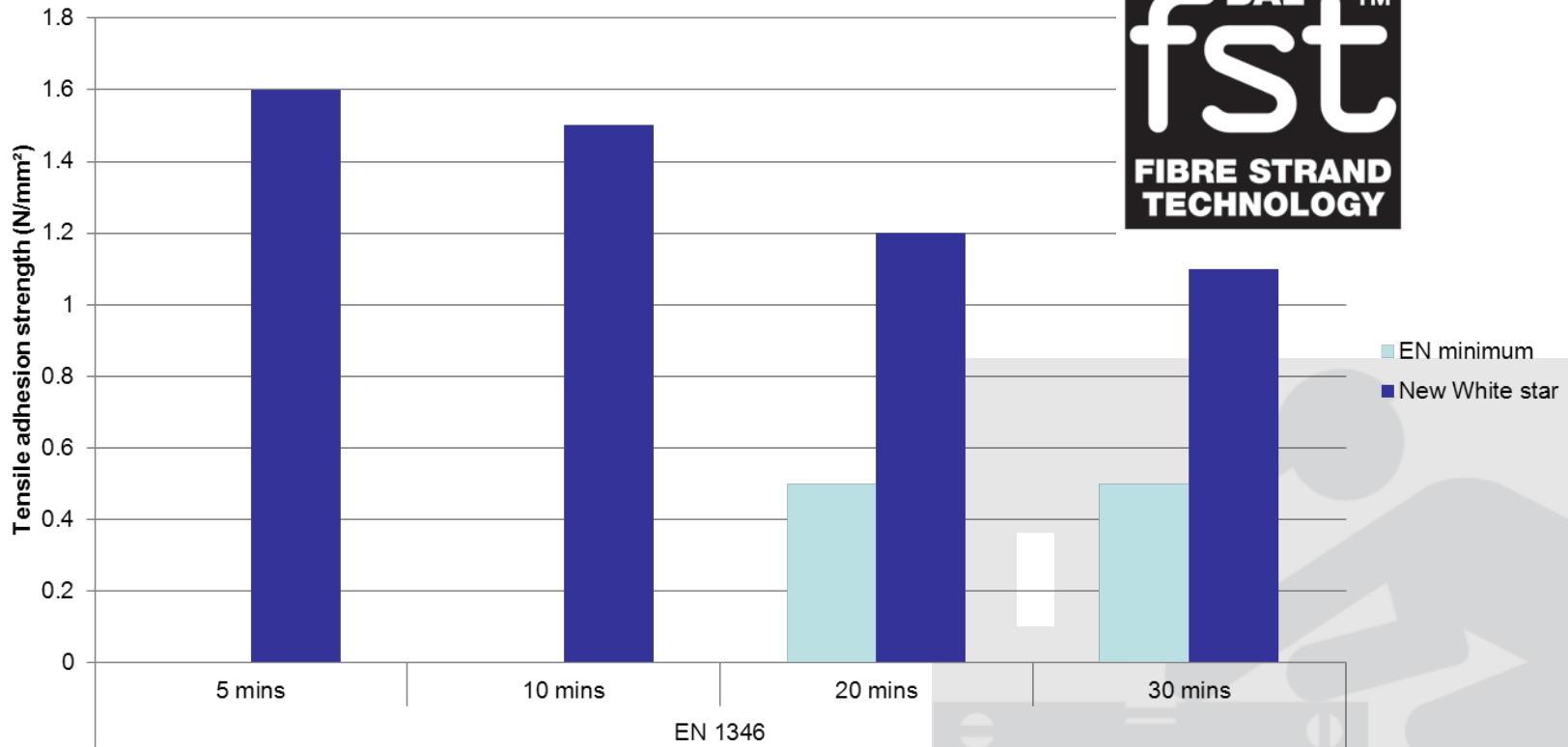
Improved application is due to the lightweight fillers.

EN 1324



Improved EN 1324 Shear adhesion strength.

EN 1346



Improved EN 1346 open time performance.

BAL White Star Plus & BAL Grip Plus

- EN12004 D2TE
- Brighter, whiter colour for application of glass tiles and mosaics
- Lighter, smoother formulation for easy cut out and application
- Highly flexible
- Fibres improve strength and extend open time (>30



Reduced bucket weight for the same volume.

Cement Based Adhesives



BAL Wall & Floor Professional & BAL CTF4

- EN12004 C2TE
- Non-slip
- Water / frost-resistant
- Interior / exterior
- Bed thickness 2 - 6mm and 12mm in small areas
- Pot life 20°C 5 hours
- Open time 30 mins
- Setting time 16 hours



Ideal for solid backgrounds.

BAL Rapidset

- EN12004 C2FT
- Rapid-setting
- Water / frost-resistant
- Non-slip
- Interior / exterior
- Bed thickness 2 - 6mm and 12mm in small areas
- Pot life 20°C 45 mins
- Open time 20 mins
- Setting time 2 hours
- Grey



Ideal for solid backgrounds.

BAL Supercover Rapidset

- High yield tile adhesive
- 60% additional coverage
- A 15kg bag of **BAL Supercover Rapidset** will cover an average 6 m²
- More m² for less cost
- User requires fewer mixes which results in labour time saved = more cost saving



Easier to transport and handle.

BAL Supercover Rapidset

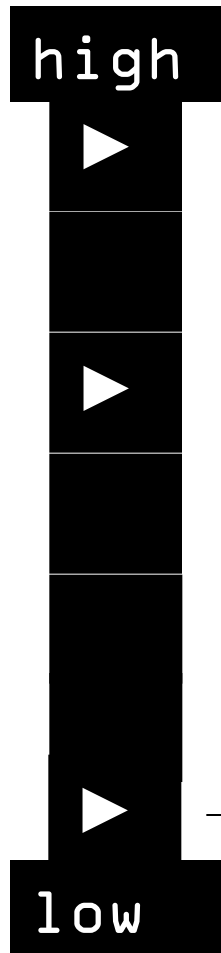
- EN12004 C1FT
- Rapid-setting
- Water / frost-resistant
- Non-slip
- Interior / exterior
- Bed thickness 2 - 6mm
and 12mm in small areas
- Pot life 20°C 45 mins
- Open time 20 mins
- Setting time 2 hours
- Grey



2 hours

More coverage and fewer mixes.

BAL Flexibility Chart



Highly flexible when using BAL ADMIX AD1.

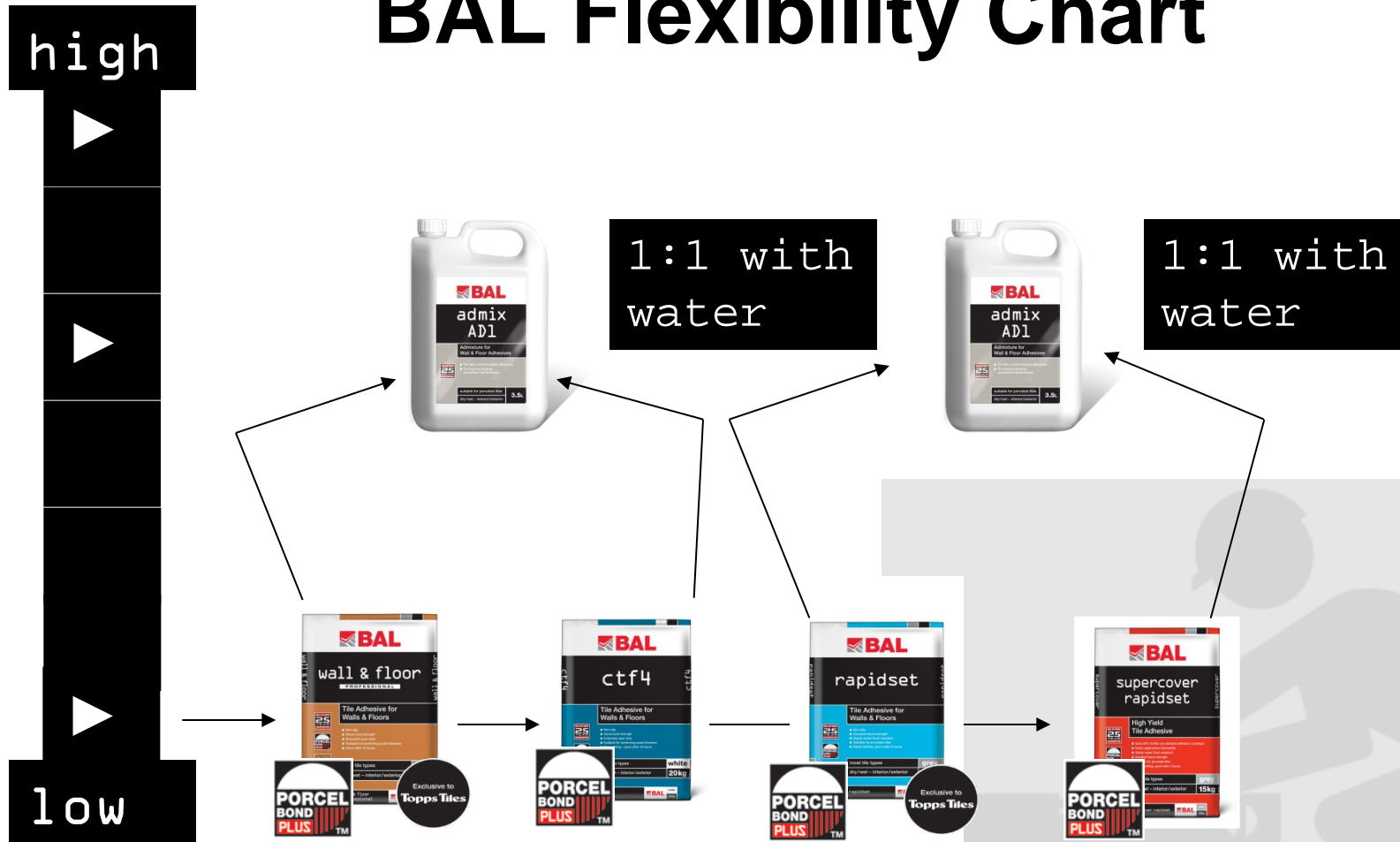
BAL Admix AD1

- 1 part **BAL Admix AD1** to 1 part water
- Flexible
- Higher bond strength
- Not for use with **BAL cement based grouts**
- Can only be used with the following **BAL Products:-**



Improve the products with BAL ADMIX AD1.

BAL Flexibility Chart



Highly flexible when using BAL ADMIX AD1.

BAL Single Part / Rapidset Flexible

- EN12004 C2TE & C2FT
- Slow & rapid-setting
- Water / frost-resistant
- Non-slip
- Interior / exterior
- Bed thickness 2 - 6mm and 12mm in small areas
- Pot life 20°C mins
- Open time 20 mins
- Average floor coverage of 5 m² from a 20kg bag



16 hours

Grey
White



3 hours

Grey

Flexible in one bag.

BAL Supercover Rapid Flex

- EN12004 C1FTS1
- Rapid-setting
- Water / frost-resistant
- Flexible
- Built-in admixture
- Interior / exterior use
- Bed thickness 2 - 6mm
- Pot life 20°C 45 mins
- Open time 20 mins
- Setting time 3 hours
- Grey / White



3 hours

More coverage and fewer mixes.

BAL turbo set

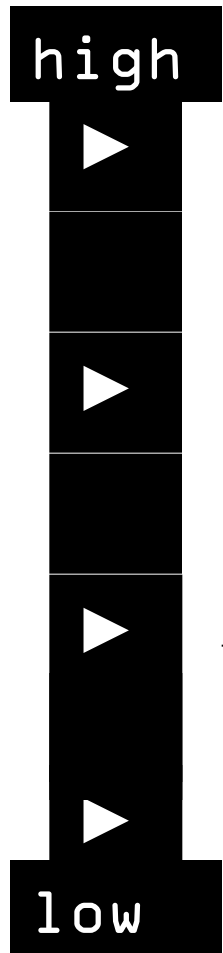
- EN12004 C2F
- Rapid-setting in just 30 mins
- Ideal for repairs and finishing of tiling.
- Water / frost-resistant
- Flexible
- Built-in admixture
- Interior / exterior use
- Bed thickness 2 - 10mm and 15mm in small areas
- Pot life 20°C 10 - 15 mins
- Grey / White



30 Minutes

Ideal for small areas and repairs.

BAL Flexibility Chart



Flexible in one bag.

Innovation Products



BAL Max-Flex Fibre / BAL Rapid-Flex Fibre Plus /BAL Rapidset Flexible Fibre

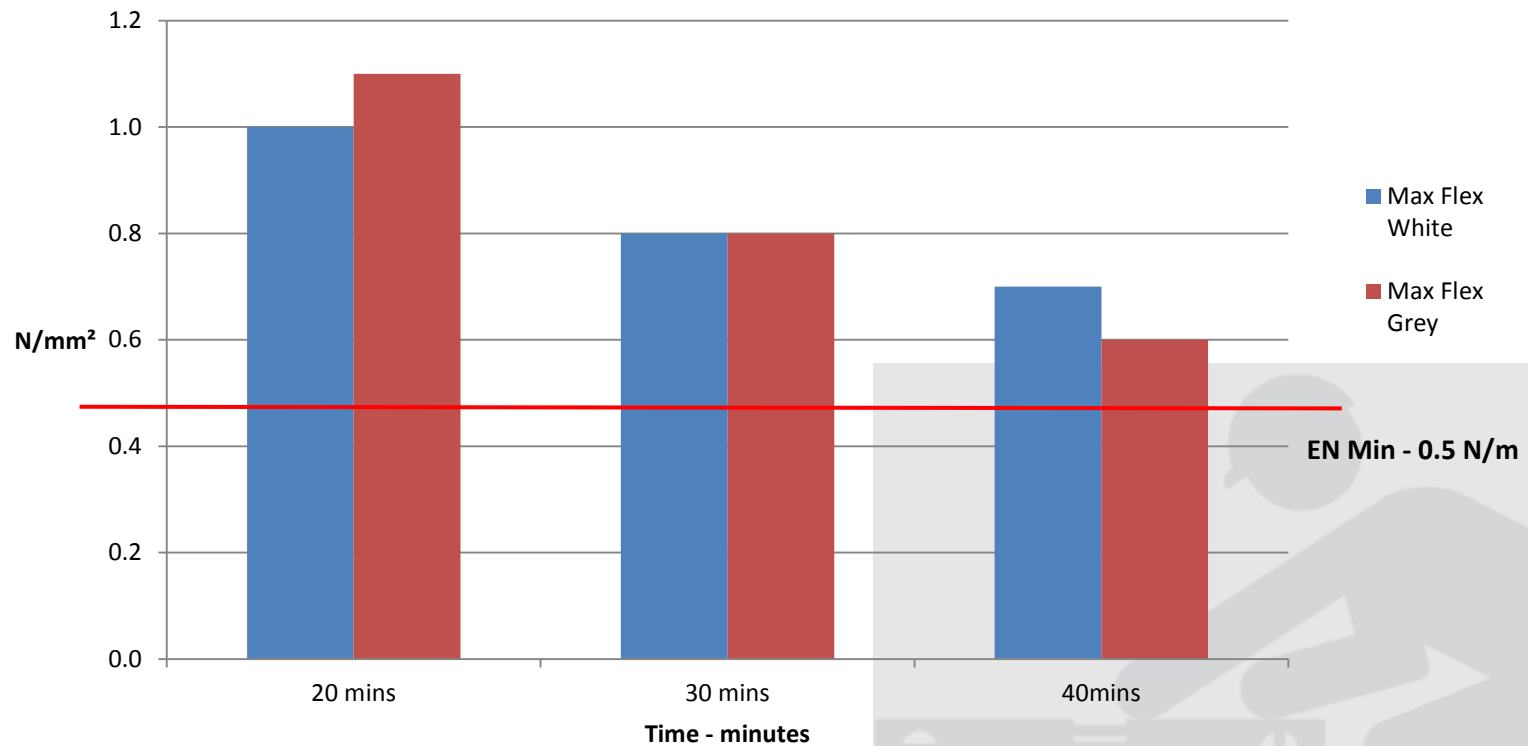
- Slow & rapid-setting
- Water / frost-resistant
- Non-slip
- Interior / exterior
- Bed thickness 2 - 6mm
- Pot life 20°C mins
- Open time 30 – 40> mins
- Include fibre technology
- Smooth mix for easy application



Spread more and fix more in one go.

BAL Max-Flex Fibre

Max-Flex Fibre - Open time to EN1348



Spread more and fix more in one go.

BAL Max-Flex Fibre

Features and benefits :-

- Adhesive suitable for a large range of tile types:
 - Large format - excellent grab and non-slip properties
 - Mosaics – fine smooth formulation and brilliant white colour
 - Glass tiles (as mosaics)
 - Porcelain and fully vitrified tiles
 - Natural stone - subject to water sensitivity
 - Terrazzo
- Excellent extended open time – achieves $>0.5 \text{ N/mm}^2$ at 40 minutes
- Smooth fine mix, very easy to mix and apply
- Suitable for most substrates i.e. plywood walls and glazed wall and floor tiles.
- Deformable (suitable for 15mm plywood overlay and timber walls)
- Suitable for internal and external use – frost resistant
- Suitable for use in dry and wet areas, including swimming pools



BAL Rapid-flex Fibre Plus

Features and benefits :-

- Adhesive suitable for a large range of tile types:
 - Large format - excellent grab and non-slip properties
 - Mosaics – fine smooth formulation and brilliant white colour
 - Glass tiles (as mosaics)
 - Porcelain and fully vitrified tiles
 - Natural stone - subject to water sensitivity
 - Terrazzo
- Excellent extended open time – achieves $>0.5 \text{ N/mm}^2$ at 30 minutes
- Smooth fine mix, very easy to mix and apply
- Suitable for most substrates i.e. plywood walls and glazed wall and floor tiles
- Deformable (suitable for 15mm plywood overlay and timber walls)
- Suitable for internal and external use – frost resistant
- Suitable for use in dry and wet areas, including swimming pools



Exclusive to
Topps Tiles

BAL Rapidset Flexible Fibre

Features and benefits :-

- Adhesive suitable for a large range of tile types:
 - Large format - excellent grab and non-slip properties
 - Mosaics – fine smooth formulation and brilliant white colour
 - Glass tiles (as mosaics)
 - Porcelain and fully vitrified tiles
 - Natural stone - subject to water sensitivity
 - Terrazzo
- Excellent extended open time – achieves $>0.5 \text{ N/mm}^2$ at 30 minutes
- Smooth mix, very easy to mix and apply
- Suitable for most substrates Deformable (suitable for 15mm plywood overlay and with BAL ADMIX AD1 (1:3) on to timber walls and glazed wall and floor tiles)
- Suitable for internal and external use – frost resistant
- Suitable for use in dry and wet areas, including swimming pools



Everyone loves a free upgrade



Get the latest
BAL innovation
at no extra cost!



see-it-for-yourself.com

All the benefits without the cost .

Upgrade your open time



30
minutes
open
time

So you can get
more done, more
precisely – for longer.

Upgrade your working time



60
minutes
working
time

Spend more time
working and less time
mixing – with less waste.

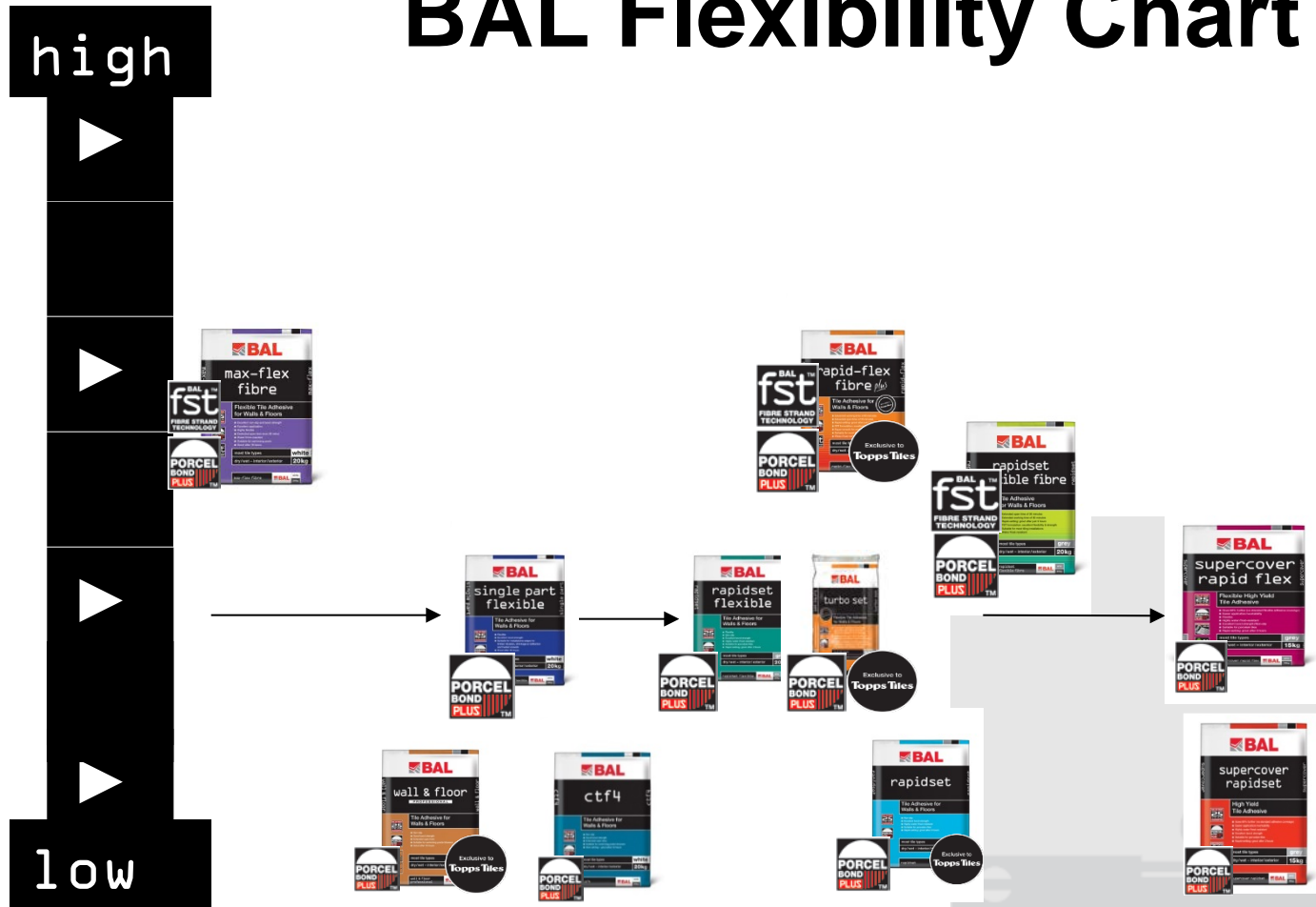
Upgrade your work life



3
hours
later
grout
and go!

Fantastic!

BAL Flexibility Chart



Flexible in one bag.

BAL Stone & Tile PTB

- Rapid-setting
- Floor areas only
- Built-in admixture (**BAL admix AD1** can be added)
- Interior / exterior
- Flexible
- Bed thickness 3 - 25mm
- Pot life 20°C 45 mins
- Open time 20 mins
- Setting time 3 hours
- White / Grey



3 hours

Ideal for natural stone and large format tiles.

BAL Admix AD1

- 1 part **BAL Admix AD1** to 3 part water
- Flexible
- Higher bond strength
- Not for use with **BAL cement based grouts**
- Can only be used with the following **BAL Products:-**



Improve the products with BAL ADMIX AD1.

BAL Flexibility Chart



Flexible in one bag.

BAL Single Part Fastflex

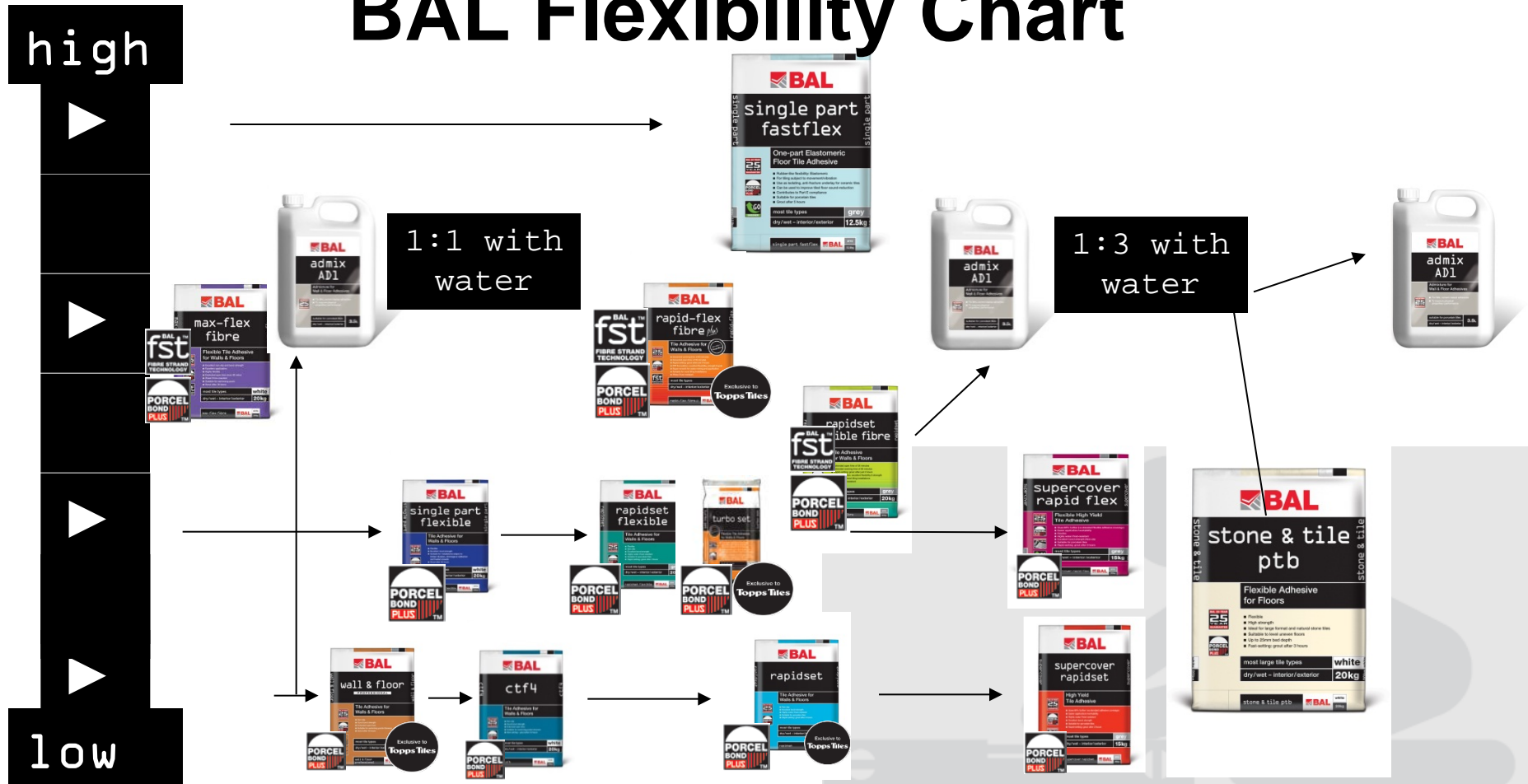
- Highly flexible
- Built-in admixture
- Interior / exterior use
- Average coverage of 5.7 m² per 12.5kg bag
- Bed thickness 2 - 10mm
- Pot life 20°C 30 mins
- Open time 20 mins
- Setting time 5 hours
- Grey / White
- 12.5kg and 5kg bags



5 hours

If you don't know what to use, this is the product.

BAL Flexibility Chart



BAL Adhesive Flexibility Chart.

Thank you for your time!

Any questions?