

Preparation Products

Poor Drying, Poor Workmanship and Inadequate Preparation Leads To Costly Failures

This could be YOU!



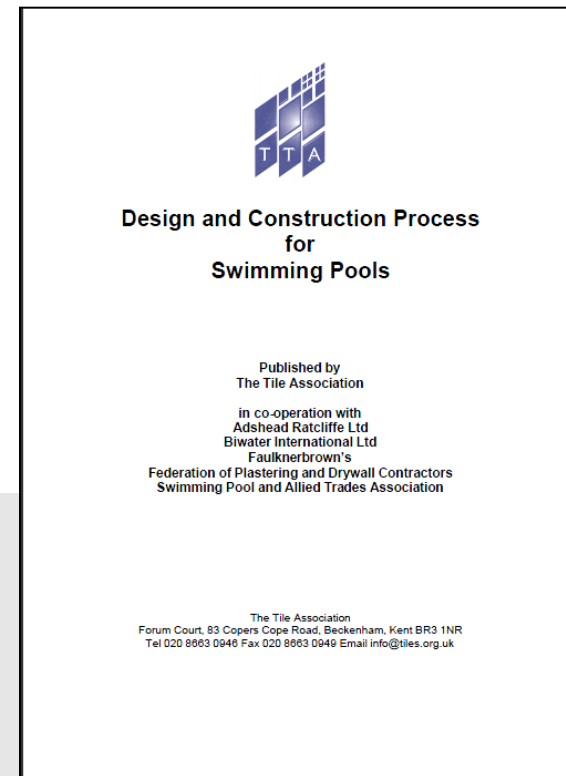
When fixing is done incorrectly.

Promote Best Practice Tile Installation



BAL provides you the system with a guarantee.

Promote Best Practice Tile Installation



BAL provides you with confidence to do your work.

Wall Backgrounds



Main Wall Backgrounds

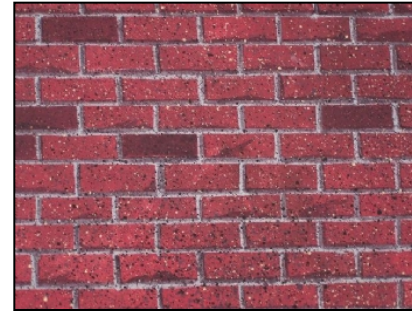
- Cement / sand rendering
- Gypsum plaster
- Plasterboard
- Existing tiles
- Timber - based boards
- Painted surfaces
- Cement boards



With the correct preparation.

Other Wall Backgrounds

- Brickwork
- Blockwork
- Concrete
- Metal
- Decorative laminate
- Glass fibre / acrylic plastic



With the correct preparation.

Pre-Preparation

- Clean
- Dry
- Sound / solid
- Flat



With the correct preparation.

BAL Primers



Exclusive to
Topps Tiles

BAL Bond SBR

Multi-purpose synthetic polymer primer and admixture for walls and floors.

Key Features

Enhances physical properties/performance of mortars including adhesion, durability, flexibility, waterproofing and workability
Permits feather edging of repair mortars.
Prepares tiling backgrounds/substrates.

Use for

- Bonding agent and admixture for adding to mortars used for Screeding, rendering, bricklaying, pointing, and repairs
- Prime before fixing on timber, plaster, screeds, rendering or vinyl tiles
- Slurry coat of cement or plaster mix for wall and floor backgrounds in dry or wet interior and exterior environments.
- Suitable for swimming pools.



When do you Prime??

BAL Prime APD & BAL Primer

Polymer primer for walls and floors.



Key Features

Stabilises dusty surfaces. Reduces porosity of backgrounds.

Use for

- Preparing wall and floor backgrounds prior to fixing of ceramics, mosaics and natural stone tiles in dry or wet interior and exterior environments.
- May also be used with **BAL ACRYBASE**, **BAL LEVEL-MAX** Levelling Compounds and with **BAL WP1/Waterproofing Kit for Showers**
- **Use undiluted on**
 - Plaster walls and plasterboard (when using a **BAL cementitious adhesive**)
 - Tongued and grooved floorboards
 - Anhydrite screed floors (first coat diluted 1:1, second coat undiluted)
- **Use diluted 1:1 with clean water on:**
 - Plaster walls (when using a BAL ready-mixed adhesive), only if dusty or porous
 - Cement floors

When do you Prime??

Cement/Sand Rendering



- Ideal background
- Water-resistant
- 1:3 or 4 cement / sand mix
- Wood float finish
- Allow 14 days drying time
- BAL BOND SBR



Ideal to tile using the correct adhesive.

BAL Quickset Render



BAL Quickset Render

- Pre-blended rapid setting, single component polymer modified cement:sand mortar.
- Ideal for fast-track installations and patch repairs.
- Tiling can be carried out in just 2 hours.
- Slurry coat, 2 parts BAL QUICKSET RENER to 1 part BAL BOND SBR by weight when used on to glazed bricks/tiles.
- 3.5 litres of clean water to 25kg bag.
- 1-2mm bonding coat.
- 2mm up a maximum 20mm with normal rendering practices.
- Working time 30 minutes.



Gypsum Plaster



- Most common in the UK
- Allow 4 weeks drying time
- Surface condition
- Maximum weight tiling 20kg per m² including adhesive and grout
- Bonding / browning plaster
- Polished plaster - Multi-finish plaster
- One coat plaster
- Stiff bristle brush
- Prime using BAL PRIME APD or BAL PRIMER



Undiluted

Ideal to tile using the correct adhesive.

Plasterboard



- Direct fixing
- Stability
- Maximum weight tiling 32kg per m², including adhesive and grout
- Decorating side
- No need to prime when using cement based adhesives.

Ideal to tile using the correct adhesive.

Existing tiles



- The surface is flat and true
- Check for soundness
- Hollow / voids, sounding tiles
- Weight issue
- Wash down surface
- Delayed drying – ready mixed adhesives
- BAL ADMIX AD1 with BAL SUPERCOVER or BAL CTF4
- Direct fixing using BAL MAX FLEX FIBRE or BAL RAPID-FLEX FIBRE PLUS

Ideal to tile using the correct adhesive.

Timber - based boards



- Types of boards
- Adequately braced – 300mm centres
- Seal back and exposed edges using – BAL BOND SBR
- Screwed, not nailed
- MDF



Ideal to tile using the correct adhesive.

Painted surfaces



- Sound / strength
- Wash down surface
- Delayed drying
- Weight issue



Ideal to tile using the correct adhesive.

Cement Boards



For walls

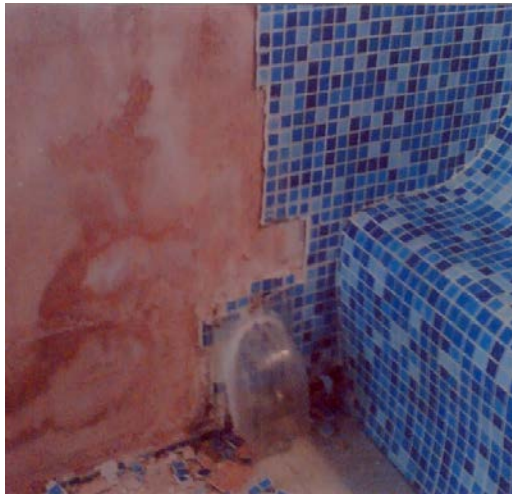
- Check with board manufacture if suitable
- Weight will depend on board and how it is fixed
- Ensure boards are securely fixed and rigid – 300mm centres or adhesive fixed
- Use appropriate tape over joints

Ideal to tile using the correct adhesive.

Protecting Water Sensitive Backgrounds



Insert BAL TANK-
IT IMAGE



The best tiling can be ruined without tanking

BAL Waterproof Systems



Exclusive to
Topps Tiles

Insert BAL TANK-IT IMAGE



BAL Waterproofing Kit For Showers

- Protect water sensitive backgrounds
- Internal use only
- Enhance flexibility & elasticity
- Seamless
- Easy to apply
- Domestic shower applications



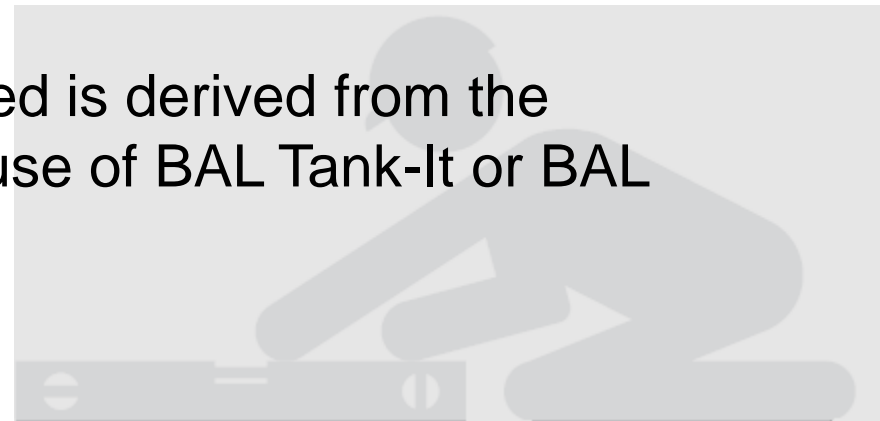
BAL Waterproofing Kit For Showers



- 2-part waterproofing system/kit for walls and floors.
- Rapid-setting; allows tiling in less than 2 hours.
- Everything in one bucket (including plastic trowel!), with outer bucket used to mix product.
- Ideal for showers and wet rooms.
- Even suitable in total immersion areas such as swimming or hydrotherapy pools, spas, hot tubs.
- Even suitable for external use (BS EN 14891) for terraces or balconies.
- The weight of the tile that can be used is derived from the substrate, with no limitation from the use of BAL Tank-It or BAL Waterproof Plus.



Insert BAL
TANK-IT
IMAGE



Thank you for your time!

Any questions?