

sitework guidance



YOU + BAL:
Working in
partnership.

The essential guide
for best practice
tiling installation.

YOU +  BAL

bal-adhesives.com



@BALtiling



BALtiling



trust BAL to get it right

BAL is the UK's leading brand of adhesives, grouts and ancillary products for professional tile fixers. Whatever the tile material, whatever the tiling background, and whatever the function of the tiled environment, there is a BAL solution that you can completely trust for quality and lasting performance.

Helping you

This guide is your compact reference to best practice on site. As a handy reference to all BAL products, see our companion booklet **BAL PRODUCT SELECTION**



Unique 25-year guarantee

Used correctly, BAL products won't let you down. That very reassuring fact is now fully confirmed via our unique 25-year product guarantee.

Unrivalled BAL experience

You can also rely on BAL to support you with expert advice if ever you may need it. No other brand can offer you the benefits of so much experience and expertise, including:

- Free training nationwide
- Free technical advice
- Free on-site consultancy
- Free specification service
- Free customer tools
- Free web based business tools

contents

PREPARATION

General

Basic principles/Tile types	3-4
Wall tiling weights/Priming	5
YOU+BAL	6-7

Background/base types

For WALL tiling	8-11
For FLOOR tiling	12-17

Other preparation

Waterproofing	18-19
Movement joints: general	20
Movement joints: for internal/external WALLS and FLOORS	21

APPLICATION

Equipment

Trowels/tools	22-23
Mixing	24

Usage

Good Practice notes	25
External tiling system	26-27

Problem-solving

Frequent queries	28-29
------------------	-------

PROFESSIONAL SUPPORT SERVICES

BAL Web/Powerspec	30
BAL Training	31
BAL Technical Advisory Service	31

PREPARATION – Basic Principles

general preparation

Basics

Before starting any tiling project, ensure that the background/base is:

- Sufficiently flat
- Clean and dry
- Free from any contamination
- Suitable for the intended service conditions
- Sufficiently strong, rigid and stable to support the tiling finish

BAL tips

making it flat – fast!

If you discover a plaster/brick/block WALL that is not sufficiently flat:

- *Make good with **BAL Quickset Render**, **BAL Quickset Cement** or **BAL Board**.*

If it's a concrete or screeded FLOOR that is uneven:

- *Make good/level with **BAL Level Max**, **BAL Acrybase**, **BAL Quickset Cement:Sand Screed** or use **BAL Board** with a **BAL Flexible Tile Adhesive**.*

All these products provide rapid-setting solutions, so there's only minimal delay to your starting the tiling work.

For wet environments

- *In wet areas:* tank out with **BAL Tank-It / BAL Waterproofing Kit / WP1 waterproofing system**
- *In intermittently wet areas (e.g. domestic showers):* an epoxy grout may be used to provide additional protection.

BASES only

- Prevent pooling of water by creating falls in the floor prior to tanking.
- **BAL Level Max** is suitable for smoothing and levelling (for most internal floor areas including timber floors).

Existing movement joints

(see also page 18)

- Fill movement joints with **BAL Silicone** or **BAL Micromax Sealant**.

NOTE: Part of the BAL range; MorTec Soft Sealant can be used.

- For perimeter movement joints with porcelain and suitable natural stone in external applications, use **MorTec Soft**, a neutral curing sealant.



PREPARATION – Principles

tile types

Ceramic and other tile types vary according to material, production method, water absorption level, size, thickness and weight.

These differences – individually and in combination – can have a direct influence on choice of a suitable adhesive and on installation procedures.

Porous tiles may have water absorption levels in excess of 10%. At the other extreme, porcelain tiles typically absorb less than 0.5% of moisture.

Always check that the correct adhesive and grout are selected to suit the material of the tiles to be fixed.

In addition to information in the BAL PRODUCT SELECTION GUIDE, packaging for all BAL adhesives and grouts clearly identifies for which tile types the product concerned is suitable.

Tile material notes

The following should be noted about individual tile types:

Glazed ceramics: Can be used for walls and floors. Not generally suitable for exterior or heavy traffic floor areas.

Unglazed ceramics: Typically used in commercial/industrial situations – and more suited to wet areas. They are available with anti-slip profile. Stain and frost-resistant.

Mosaics: Typically supplied on sheets. The backing material and its adhesive should not occupy more than 25% of the area of each tessera. Usually glazed or glass. If unglazed, seal with a suitable sealant before installing. *Check with tile manufacturer or supplier.*

Porcelain tiles: Are normally dry pressed tiles with a very low water absorption level, so they need special adhesive formulation to ensure good adhesion/bonding.



BAL products suitable for use with porcelain tiles are identifiable via the **Porcelbond Plus** mark.

Natural stone: Some light-coloured stone tiles may be susceptible to staining. Exercise care when using coloured grouts (*see page 25*). The wear capability of stone varies widely, depending on type – some hard, some softer. May require sealing. *Check with tile manufacturer or Stone supplier.*

Marble: If semi-translucent, use a rapid setting and drying *white* tile adhesive. Grey adhesive can show up as shadows in some cases.

Quarry tiles: Must have a rigid base. Not recommended for areas requiring complicated cuts.

Slate: These tiles can vary slightly in size and thickness.

Terrazzo: Highly durable, but can be slippery when wet. Should be dipped in water for a few seconds to get back wet before placement on the adhesive bed.

Terracotta: Can have a white powdery surface deposit. This is normal with certain types. Treat with an efflorescence remover, allow to dry, and apply a suitable impregnating sealer. Not frost resistant – so unsuitable for exterior use.

Glass: Some types are not suitable for use close to heat sources or in wet areas. *Check with tile manufacturer.*

Resin agglomerate: Manufactured from stone aggregates and resin. These tiles have a higher coefficient of thermal expansion and varying degrees of moisture sensitivity. *Check with the tile manufacturer or supplier.*

* Tiles PLUS adhesive & grout

** Seek further advice/guidance from board manufacturers

§ If using cementitious adhesives

‡ If using ready-mixed dispersion adhesives

▼ **BAL Bond SBR** may be used instead as primer – diluted 1:2 with clean water if using BAL *cementitious* adhesives (or 1:4 if using BAL *ready-mixed dispersion* adhesives)

Apply ONE coat of neat **BAL Bond SBR** to the reverse side and edges

PREPARATION – Factors and Guidance

wall tiling weights

Tiling wall substrates	Maximum weight* of tiling per m ²
Gypsum plaster	20kg/m ²
Gypsum plasterboard direct (i.e. without a plaster skim)	32kg/m ²
Plywood (WBP)	Up to 30kg/m ²
BAL Board 6mm and 10mm	Up to 100kg/m ² upon how the board is fixed
Lightweight tile-backer boards**	Up to 60kg/m ² upon type/ thickness of board
Glass reinforced cement sheets**	Up to 50kg/m ² dependent upon type/thickness of board
Gypsum fibre boards**	Approx. 35 - 40kg/m ²
BAL Waterproofing Kit / WP1 Waterproofing System	Up to 32 kg/m ² max, dependent on which background it is applied to i.e. plaster 20kg/m ²

Typical weight equivalents

20kg/m²: ceramic tiles up to 8mm thick (max.) or natural stone tiles up to 7mm thick (max.).

32kg/m²: ceramic tiles up to 12.5mm thick (max.) or natural stone tiles up to 10mm thick (max.).

100kg/m²: check weight limit of the background before fixing BAL BOARD.

For other weight limits: check limit against declared tile weight per m² PLUS 2-4kg/m² allowance for adhesive and grout.

primer guide

Before tiling, certain wall and floor backgrounds/substrates require priming. This may be to:

- reduce porosity of backgrounds/bases, and so prevent formation of air bubbles
- isolate surfaces containing calcium sulphate from cement-based adhesives, and so minimise risk of chemical reaction
- add surface strength to friable surfaces
- prepare surface for waterproofing/tanking, or for application of levelling compound

Key substrates/backgrounds to be primed using **BAL Prime APD**:

Note:

- Allow each coat of primer to dry between coats (second coat applied at 90° to the first).
- If using on floors, do NOT allow to form puddles.

TWO coats neat

- Gypsum plaster
- Tongue-and-groove floorboards

ONE to TWO coats

- Lightweight blockwork

TWO coats

(1st coat diluted 1:1 with clean water, 2nd coat neat when using BAL PRIME APD)

(1st coat diluted 1:4 with clean water, 2nd coat diluted 1:2 when using BAL BOND SBR)

- Calcium sulphate screed
- Anhydrite screed

ONE coat

(diluted 1:1 with clean water)

- Gypsum plaster▼†
- BAL BOARD

ONE coat

(if required i.e. surface is dusty/friable) BAL PRIME APD 1:1 or BAL BOND SBR 1:4

- Cement:sand render
- Concrete
- Cement:sand screed

Substrate/base recommended to be primed using **BAL Bond SBR**:

ONE coat neat

The following substrates may require priming on the face of the substrate/background that will receive tiles:

- Lightweight tile backer boards
- Calcium Silicate boards
- Fibre-reinforced cement sheets#
- Plywood/Chipboard#
- Plasterboard

join the
world of...

YOU
+
 **BAL**



YOU + BAL
puts you at
the heart of
a market-
leading team.

YOU +  BAL

bal-adhesives.com



@BALtiling



BALtiling



in

YOU + BAL is your passport to a world of tools, support, training, rewards and direct access into the heart of BAL.

1 development programme

- Help develop the products of tomorrow.
- Get direct access to the entire BAL team.
- Be invited to exclusive BAL events.
- Access exclusive content and industry news.
- Get new industry legislative updates.

2 business development tools

- Create a free business web profile.
- Get hot homeowner leads.
- Order BAL sales aids and literature.
- Access our free case study and award writing service.
- Get free social media promotion by BAL.

3 business support tools

- Use our new, unique Apprentice Finder Tool.
- Access our free PowerSpec online specification tool.
- For larger projects get free M40/M20 specifications.
- Use our free sample testing service for contractors.
- Access exclusive technical area on the BAL Forum.

- Get the latest BAL news and technical advice.
- Plus our leading BAL 25 year product guarantee.

4 training

- Get a free training course of your choice every year
- Train at our ITC, or we'll come to you!
- Book onto a free business development workshop

5 instant back-up, wherever and whenever

- Get industry leading, free technical support and;
- Direct access to our team of Product Support Technicians
- Access our full library of technical materials

6 ...plus exclusive rewards and discounts, including...

- Partner Card exclusive BAL discounts at selected Trade Events.
- Exclusive product promotions every single quarter.
- Free BAL merchandise to keep you looking good!
- Regular one-day only partner discounts/promotions.

and much, much more!

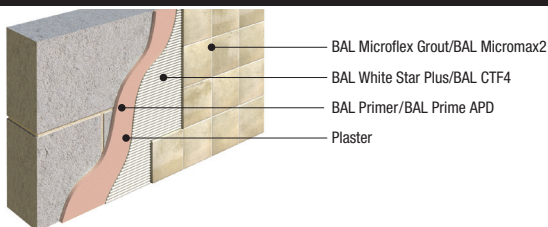
how to register

For instant access, register for YOU+BAL on the BAL website to take advantage of our partnership.

www.bal-adhesives.com

PREPARATION – Backgrounds: Walls

gypsum plaster



Max. tiling weight: **20kg/m²**
incl. adhesive and grout

- Allow new plaster to dry for min. 4 weeks. Do not tile directly to backing coats.
- Ensure finish coat is free of contaminants and all barriers to adhesion.

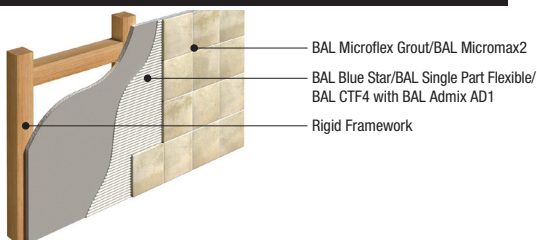
- Make good any defective areas

If plaster has polished/shiny surface

- Brush with stiff bristle brush
- Prime with **BAL Prime APD OR BAL Primer OR BAL Bond SBR** (see primer guide page 5)

- Allow to dry
- Up to 300mm tile size (ceramic) – **BAL White Star Plus**
- Any sized tile and suitable for porcelain – **BAL CTF4**

gypsum plasterboard



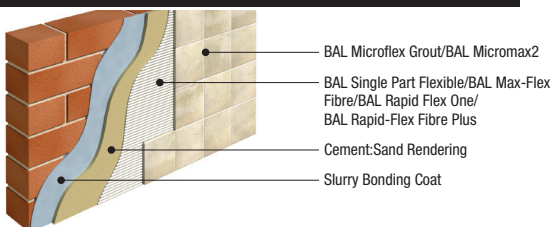
Max. tiling weight: **32kg/m²**
incl. adhesive and grout

- Check that boards are securely fixed, ideally at 300mm centres, and are rigid, or as per the Board manufacturer's recommendations

- Ensure no protruding fixings
- If using BAL cementitious adhesives*
- Allow to dry
- Up to 300mm tile size (ceramic) – **BAL Blue Star**

- Any sized tile and suitable for porcelain – **BAL Single Part Flexible OR BAL CTF4** with **BAL Admix AD1**

cement:sand rendering



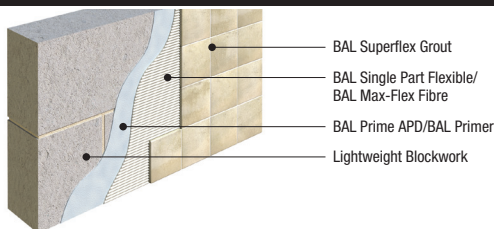
- Allow new rendering to dry for min. 2 weeks
- If swimming pool: allow min. 3 weeks.*

- If render contains **BAL Quickset Cement:*** allow 4 hours to dry.
- If render is **BAL Quickset Render:*** allow 2 hours to dry.

- If required, prime with **BAL Prime APD OR BAL Primer** (see primer guide page 5)

PREPARATION – Backgrounds: Walls

lightweight blockwork/walling



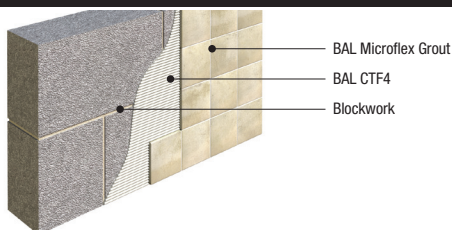
NOTE: Only suitable for internal dry environments unless rendered. If blockwork walls are not sufficiently flat enough to receive a tiling finish direct, apply BAL Quickset Render or BAL Board.

- Allow new block mortar to dry for min. 6 weeks before rendering/plastering
- If direct fixing tiles, wall MUST be smooth-faced.*

- Prime with **BAL Prime APD OR BAL Primer** (see primer guide page 5)
- Allow to dry

NOTE: If blockwork walls are not sufficiently flat enough to receive a tiling finish direct, apply BAL Quickset Render or BAL Board.

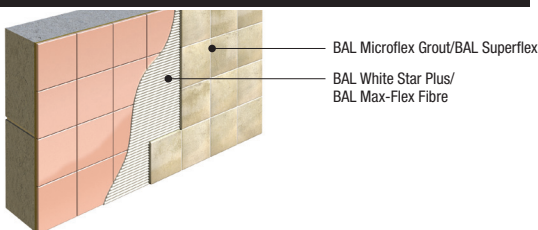
dense concrete/block walling



- Allow new block mortar to dry for min. 6 weeks before rendering/plastering

If direct fixing tiles, wall MUST be smooth-faced.

existing glazed tiles/bricks



- Check that
 - existing tiles/bricks are securely bonded to their substrate, and in sound clean condition
 - underlying background/walls can support two layers of tiles

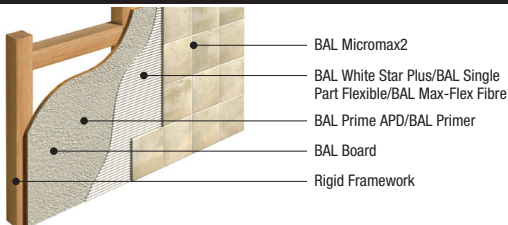
If existing tiles are NOT sound

- Remove any loose tiles
- Make good with **BAL Quickset Render** or 1:3 cement:sand mortar applied over a slurry bonding coat (Portland cement 2:1 with **BAL Bond SBR** by weight)

- Up to 300mm tile size (ceramic) – **BAL White Star Plus**
- Any sized tile and suitable for porcelain and mosaics – **BAL Max-Flex Fibre**

PREPARATION – Backgrounds: Walls

BAL Board sheets



Max. tiling weight (dependent on board type/thickness):
100kg/m² incl. adhesive and grout.

- Screw boards to seasoned timber framework (or other suitable proprietary framework) at 300mm centres

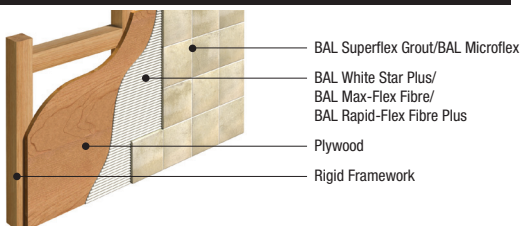
NOTE: See BAL TECHNICAL DATA SHEET for further information.

- Ensure boards are securely fixed and rigid
- Up to 300mm tile size (ceramic) – **BAL White Star Plus**

NOTE: Note: Priming is not required when using BAL White Star Plus.

- Any sized tile and suitable for porcelain – **BAL Single Part Flexible/ BAL Max-Flex Fibre**

plywood



NOTE: Use moisture resistant or exterior grade boards.

- Seal reverse side and board edges with **BAL Bond SBR**

NOTE: Do NOT seal or prime board surfaces to be tiled.

Max. tiling weight (dependent on board type/thickness):
30kg/m² for plywood incl. adhesive and grout.

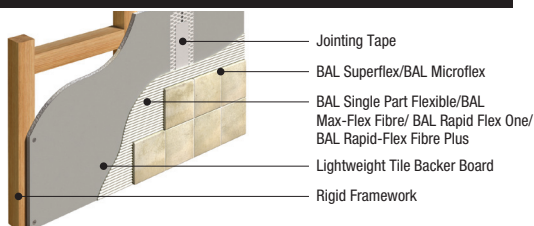
- Screw boards to seasoned timber framework (or other suitable proprietary framework) at 300mm centres – or as recommended by board manufacturer
- Ensure boards are securely fixed and rigid
- Up to 300mm tile size (ceramic) – **BAL White Star Plus**

- Any sized tile and suitable for porcelain – **BAL Max-Flex Fibre/ BAL Rapid-Flex Fibre Plus**

▼ Check with individual board manufacturer.

PREPARATION – Backgrounds: Walls

lightweight tile backing boards onto rigid framework



NOTE: Check with board manufacturer that tile backer boards are suitable.

Max. tiling weight (dependent on board type/thickness): **40kg/m²** incl. adhesive and grout.

- Screw boards to seasoned timber

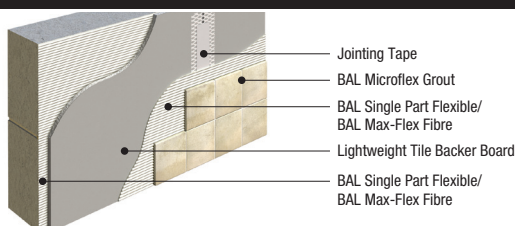
framework (or other suitable proprietary framework) at 300mm centres – or as recommended by board manufacturer

- Ensure boards are securely fixed and rigid

- Ensure no protruding fixings
- Use appropriate tape over joints

▼ Check with individual board manufacturer.

lightweight tile backing boards onto concrete/blockwork/brick/render



NOTE: Check with board manufacturer that tile backer boards are suitable and fit for purpose.

Do NOT seal or prime board surfaces to be tiled.

As a guide max. tiling weight approx. **40kg/m²** including adhesives and grout (dependent on board type and thickness) or as recommended by the manufacturer.

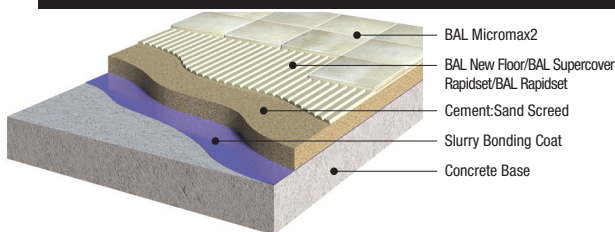
- Fix boards to walls using adhesive (e.g. **BAL Single Part Flexible, BAL Max-Flex Fibre, BAL Rapid Flex One, BAL Rapid-Flex Fibre Plus or BAL Supercover Rapid Flex**) as recommended by board manufacturer

- Ensure boards are securely fixed and rigid
- Use appropriate tape over joints

▼ Check with individual board manufacturer.

PREPARATION – Bases: Floors

cement:sand screed



For newly-laid screed

- Allow screed to dry for min. 3 weeks – or 4 hours if screed is **BAL Quickset Cement**

*If fixing with **BAL New Floor adhesive**, allow screed to dry for at least 24 hours.*

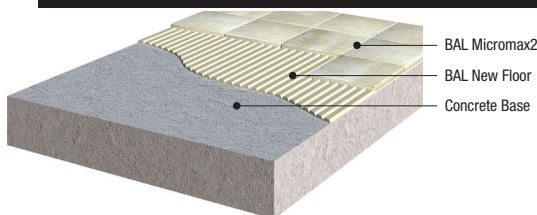
For existing screed

- Cut out all loose or hollow parts
- Apply slurry bonding coat
- Make good with EITHER 1:3 cement:sand mortar OR **BAL Pourable One/BAL PTB Fibre Plus** (for localised areas). Apply over a slurry bonding coat.
- Make good with a levelling compound e.g. **BAL Level Max** dependent on underlying substrate

SLURRY BONDING COAT

- 1 part sand to 1 part **BAL Quickset Cement**/portland cement by weight, mixed with appropriate amount of **BAL Bond SBR** pre-diluted 1:1 with clean water.
- OR **BAL Pourable One/BAL PTB Fibre Plus** 2:1 with **BAL Bond SBR** by weight

concrete base



For newly-laid concrete

- Allow concrete to dry for min. 6 weeks

*If fixing with **BAL New Floor adhesive**, allow 1 week drying time.*

- Before tiling, mechanically remove laitance from concrete surface (e.g. grit blasting) or scarifying

PREPARATION – Bases: Floors

asphalt base (internal floors)



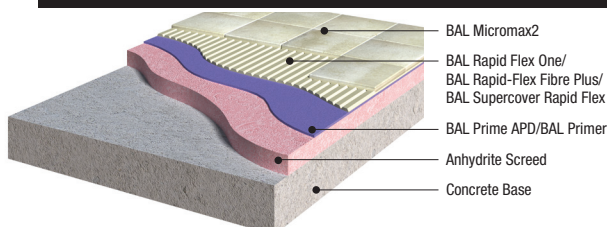
NOTE: Mastic asphalt should be suitable type (e.g. flooring grade).

- Check that asphalt is – sound, with a natural float finish

- laid on a firm rigid base
- a sufficiently regular surface to suit bedding depths of adhesive

- Remove any surface contaminants

anhydrite screeds



- Allow screed to dry out in accordance with manufacturer's instruction
- Mechanically remove top surface to remove weak/dusty surface layer(s) as per the screed manufacturer's recommendations

- Screed must have a moisture content below 0.5% (or 75% RH)

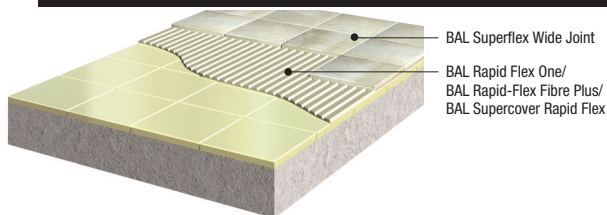
In internal dry areas

- Remove all dust and loose material, e.g. by vacuum etc

- Prime with **BAL Prime APD** or **BAL Primer** (see primer guide page 5).

Make good with a levelling compound e.g. **BAL Level Max** dependent on underlying substrate

existing ceramic/quarry tile/terrazzo/natural stone base



- Ensure existing tiles are securely bonded to their substrate, and in sound, clean condition

If existing tiles are NOT sound

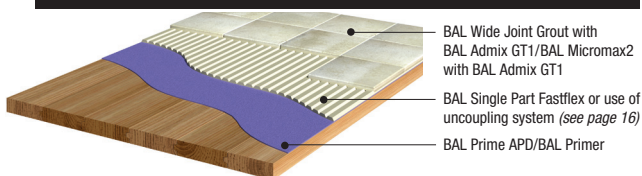
- Remove any loose tiles
- Remove any unsound adhesive residue without damaging the base

- Apply slurry bonding coat
- Whilst slurry coat is wet, make good with – EITHER 1:3 cement: sand mortar
- OR **BAL Pourable One/BAL PTB Fibre Plus**

NOTE: When tiling on to existing glazed tiles, use BAL Admix AD1 1:3 with clean water to BAL Rapid Flex One/BAL Rapid Flex Fibre Plus/BAL Pourable One/BAL PTB Fibre Plus.

PREPARATION – Bases: Floors

softwood/tongue & groove floorboards



- Check that boards are dry and free from varnish
 - Ensure all boards are securely fixed and rigid: all screwed down to supporting joists at 300mm centres
 - Ensure no protruding fixings
 - Prime with **BAL Prime APD** or **BAL Primer** (see primer guide page 5).
 - Make good with a levelling compound e.g. **BAL Level Max** dependent on underlying substrate
- NOTE:** See admixture guide when grouting (page 24).

plywood overlaid tongue & groove floorboards



NOTE: plywood should be WBP or marine grade 15mm min. thickness.

- Check that existing floorboards are dry, securely fixed and acceptably level
- Make good with a levelling compound

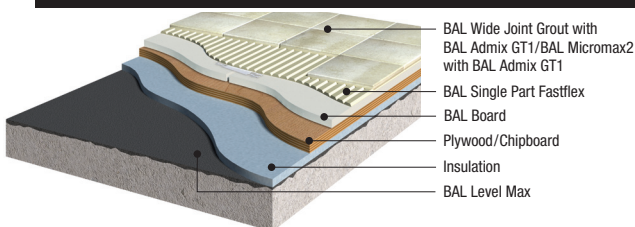
e.g. **BAL Level Max** dependent on underlying substrate

- Seal plywood reverse side/edges with **BAL Bond SBR**

NOTE: Dependent on the type and quality of the plywood, the surface may require priming.

- Lay sheets with staggered cross joints, and 0.5-1mm gap between boards
- Screw down sheets at 300mm centres ensuring screw heads are flush with the surface

floating chipboard/plywood floors



NOTE: timber sheets should be water resistant or exterior grade.

- If concrete base is not flat, level it as required with **BAL Level Max**
- Check insulation can support tiling load
- Seal timber reverse side/edges with **BAL Bond SBR**

NOTE: Dependent on the type and quality of the plywood, the surface may require priming.

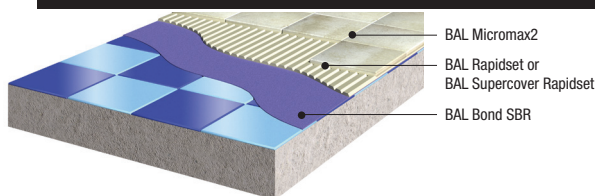
- Ensure timber sheets are – dry and rigid with no protruding fixings – tongue & groove edged – glued and well-bonded (with minimal joints)
- If chipboard unsuitable for tiling overlay with moisture sensitive BAL Board
- Leave min. 15mm gap between board

- edges and walls/floor penetrations
- Fill gaps with insulation strip
- Ensure finished floor is stable and capable of carrying anticipated loading without excessive deflection

NOTE: See admixture guide when grouting (page 24).

PREPARATION – Bases: Floors

existing vinyl tile/sheet base



- Ensure existing vinyl tiles/sheets are securely bonded to their substrate, and in sound clean condition

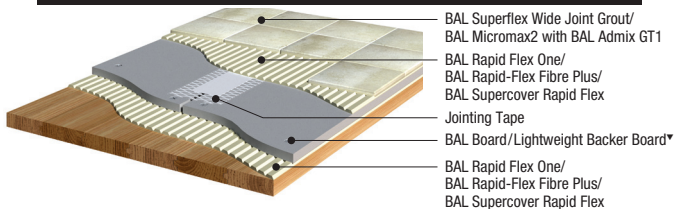
If existing tiles are NOT sound

- Remove any loose tiles
- Make good with a levelling compound, e.g. **BAL Acrybase**, dependent on underlying substrate

- Remove all traces of grease/polish

NOTE: Priming is NOT necessary if using a flexible cementitious adhesive e.g. **BAL Rapid Flex One**, **BAL Rapid-Flex Fibre Plus**, **BAL Supercover Rapid Flex**, **BAL Single Part Flexible** or **BAL Max-Flex Fibre**.

BAL Board/lightweight backer board (min. 10mm thick) onto timber floors



- Prime timber floors with **BAL Prime APD** or **BAL Primer** (see primer guide page 6) before attempting to fix backer board
- Lay first 3–6mm bed of **BAL Rapid Flex One/ BAL Rapid-Flex**

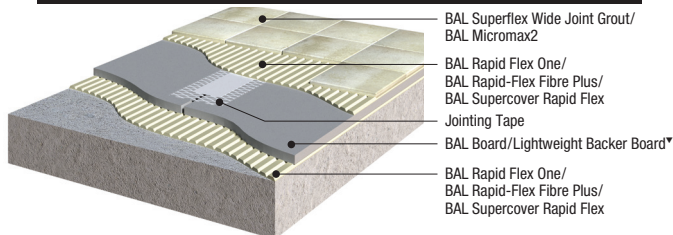
Fibre Plus/ BAL Supercover Rapid Flex onto timber

- Before this has set, screw down tile backer boards at 300mm centres
- Ensure no protruding fixings

- Check that tile backer boards are securely fixed and rigid
- Use appropriate tape over joints

▼ Check the suitability of the tile backer board with the manufacturer.

BAL Board/lightweight backer board onto concrete floors



If newly-laid concrete

- Allow concrete to dry for min. 6 weeks
- Lay first 3–6mm bed of **BAL Rapid Flex One/ BAL Rapid-Flex Fibre Plus/ BAL Supercover Rapid Flex** onto timber

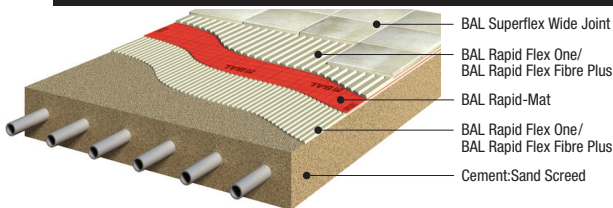
- Before this has set, place tile backer boards into position
- Use appropriate tape over joints
- Allow adhesive to set before tiling begins

- Check that tile backer boards are stable, level and rigid

▼ Check the suitability of the tile backer board with the manufacturer.

PREPARATION – Bases: Floors

heated screeds (integral underfloor heating)



For newly-laid screed

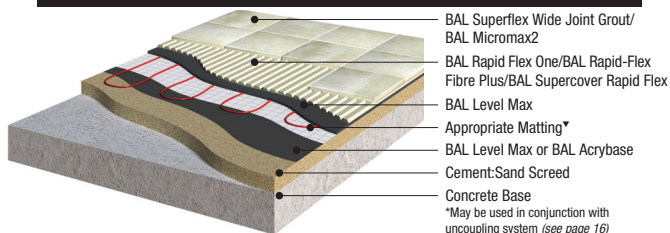
- Allow screed to dry for min. 3 weeks – or 1 week if screed is **BAL Quickset Cement**
- Screed may then be gradually heated up –

up to a maximum operating water temperature of 45°C, as recommended by the heating manufacturer – and maintained at that level for 3 days. Then

allowed to cool to room temperature

- Heating to be turned off for 24 hours prior to tiling – or, in cold weather, reduced to below 15°C

under tile heating on cement:sand screeds



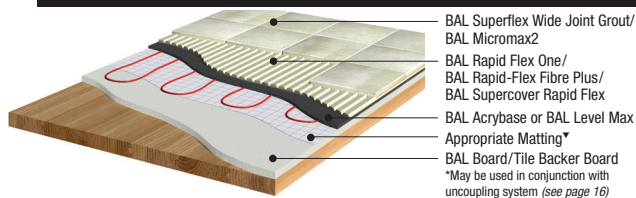
- Base must be
 - flat enough to allow tiling
 - suitable for anticipated service conditions
 - strong/rigid enough to support tile finish
 - free from contamination

- *If new base, allow to dry: concrete min. 6 weeks; screed min. 3 weeks*
- Prime highly absorbent cement:sand screed with **BAL Prime APD** or **BAL Primer** (see primer guide page 5)

- *If base is not flat, level it with*
BAL Level Max

▼ Check the suitability of matting with the manufacturer.

under tile heating over timber floors



- New timber base should have noggings between joists at 300mm centres
- Floor base must be strong/rigid enough to support tile finish

- Overlay floorboards with
 - BAL Board/tile backer boards (min. thickness 10mm) OR
 - plywood (min. thickness 15mm)
- Screw boards/plywood to both noggings and joists at 300mm centres

If using plywood, prime with **BAL Bond SBR** (see primer guide page 5)

▼ Check the suitability of matting and the tile backer board with the manufacturer.

PREPARATION – Bases: Floors

impact sound-deadening insulation



BAL Superflex Wide Joint Grout/
BAL Micromax2

BAL Single Part Fastflex

Acoustic Matting

BAL Single Part Fastflex

NOTE: **BAL Single Part Fastflex** should be used with approved matting systems to achieve requirements of Building Regulations 2000: Part E – Resistance to the passage of sound.

- Lay matting on flat, rigid base with no protrusions

- Spread adhesive over base

NOTE: Priming will be required on timber floors (see primer guide page 5).

- Bond matting as per manufacturer's instructions

For information on approved systems, contact BAL Technical Advisory Service (details on back cover).

uncoupling membrane



BAL Superflex Wide Joint Grout/
BAL Micromax2

BAL Rapid Flex One/
BAL Rapid-Flex Fibre Plus/
BAL Supercover Rapid Flex

BAL Rapid-Mat

BAL Rapid Flex One/
BAL Rapid-Flex Fibre Plus/
BAL Supercover Rapid Flex
Substrate

- Check that substrate is – dry, sound, firm and rigid – level, with a regular surface to suit bedding depths of adhesive

- Make good with a levelling compound e.g. **BAL Level-Max** dependent on underlying substrate

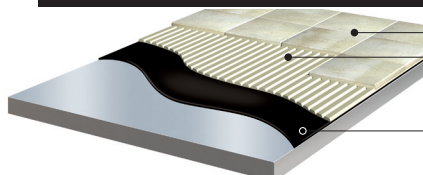
- Lay 2–3mm bed of **BAL Rapid Flex One**, **BAL Rapid-Flex Fibre Plus** or **BAL Supercover Rapid Flex** onto base, using a BAL Mosaic Trowel or equivalent

NOTE: Priming will be required on timber floors (see primer guide page 5).

- Before this has set, lay **BAL Rapid-Mat** on adhesive bed

- Tiling can be started once the **BAL Rapid-Mat** is fix down

steel background/base



BAL Micromax2 with BAL Admix GT1*

BAL Rapid Flex One/
BAL Rapid-Flex Fibre Plus/
BAL Pourable One/
BAL PTB Fibre Plus

BAL DPM

*See admixture guide when grouting (page 5)

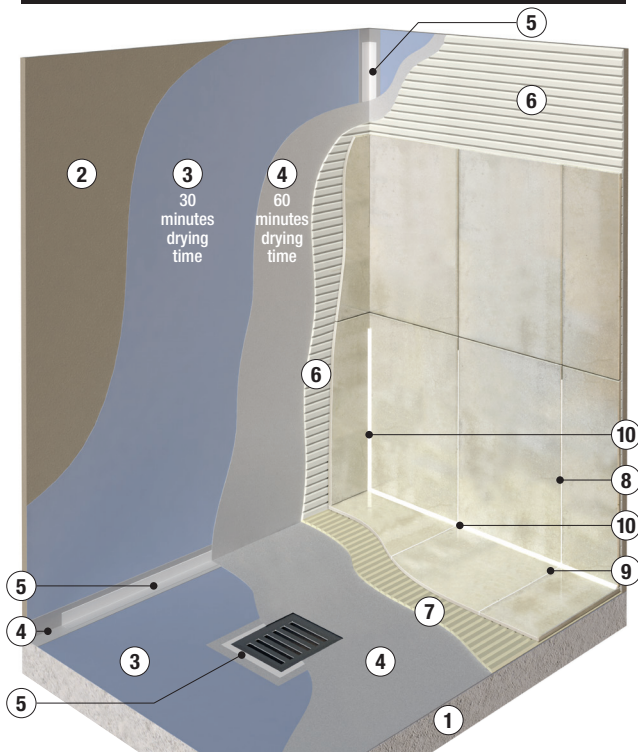
- Check that surface is: – firm and rigid – free from deflection – contaminant-free – degreased

- Prime using BAL DPM (using an A2 Trowel and roll out). When wet, blind the surface with BAL Sand to provide a mechanical key before tiling.

- The following day, remove the excess BAL Sand from the surface using a vacuum cleaner to provide a suitable key before tiling using a BAL Flexible Cement based Adhesive.

PREPARATION – Waterproofing /Tanking System

tank-it



- | | |
|--|--|
| 1 Concrete Base | 7 BAL Max-Flex Fibre /
BAL Rapid Flex One/ BAL
Rapid Flex Fibre Plus |
| 2 Plasterboard | 8 BAL Microflex Grout/
BAL Micromax2 |
| 3 BAL Tank-it (powder + liquid) | 9 BAL Micromax2 |
| 4 BAL Tank-it (powder + liquid) | 10 BAL Micromax Sealant |
| 5 BAL Tank-it Tape | |
| 6 BAL Max-Flex Fibre /
BAL Rapid Flex One/
BAL Rapid Flex Fibre Plus | |

■ Before applying the mixed product, apply the self-adhesive **BAL TANK-IT TAPE** at:

- internal and external corners of walls/partitions
- wall junctions with base/upstands/ columns
- at pipe penetration points/drainage channels/outlets
- cracks/joints in background/base

NOTE: Must use **BAL TANK-IT TAPE** as this is an alkaline tape designed not to break-down in wet environments.

■ Apply the mixed **BAL TANK-IT POWDER** and **LIQUID** to the walls and floors, using 4 x 4mm notched trowel and floating trowel or brush

■ Ensure there are no air pockets or voids

■ The product must be applied to the full height of the wet area and floor where tiles are used and exposed to water

■ Leave to dry for approximately 30 minutes until touch dry before applying the second mix

■ Repeat the mixing and application (as above)

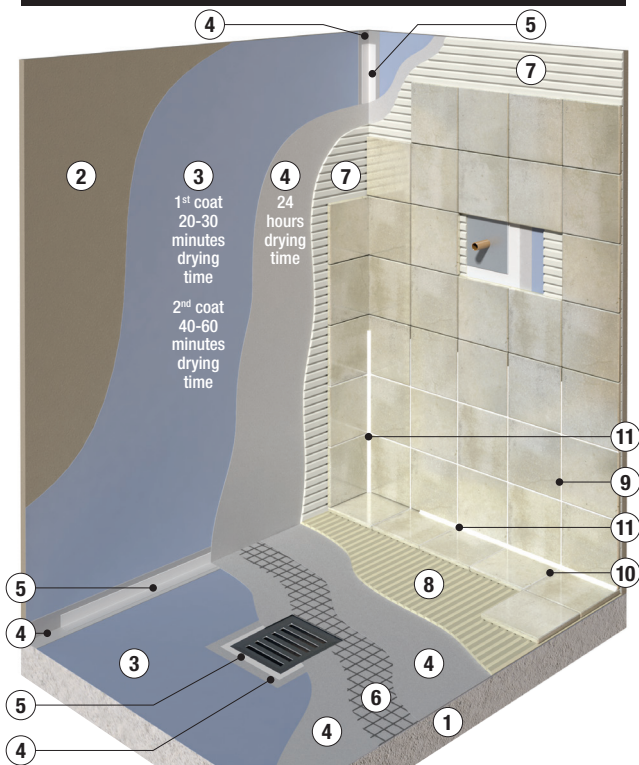
■ Once applied, leave to dry for approximated 60 minutes until touch dry – product changes colour from grey to black

■ Background is now ready to receive tiles

■ Ceramic or porcelain tiles –
BAL Single Part Flexible, BAL Max-Flex Fibre, BAL Rapid Flex One or BAL Rapid Flex Fibre Plus

PREPARATION – Waterproofing /Tanking System

waterproof kit for showers or WP1



- | | |
|-------------------------------|--|
| 1 Concrete Base | 7 BAL White Star Plus |
| 2 Plasterboard | BAL Single Part Flexible/
BAL Pourable One/
BAL Rapid Flex One |
| 3 BAL Prime APD or BAL Primer | 8 BAL Microflex Grout/
BAL Micromax2 |
| 4 BAL WP1 Waterproof Coating | 9 BAL Micromax2 |
| 5 BAL WP1 Polyester Tape | 10 BAL Micromax Sealant |
| 6 BAL WP1 Polyester Matting | |

- Prime all surfaces with **BAL Prime APD** or **BAL Primer** and allow to dry
- Apply **BAL WP1 Coating** reinforced with **BAL WP1 Polyester Tape** at:
 - internal/external corners of walls, partitions, upstands, columns etc.
 - pipe penetrations, drainage channels and outlets
 - junctions of different background/base materials
 - cracks/joints in background/base
- Apply **BAL WP1 Coating** over each piece of **Tape**
- Apply **BAL WP1 Coating** to **WALLS**, and then to **FLOOR** area

For wet areas (e.g. showers) and areas likely to be subject to some vibration/deflection (e.g. timber bases)

- Reinforce with **BAL WP1 Polyester Matting**
- **Bed Matting** into coating and apply second layer of **BAL WP1 Coating** on top
- Check that tanking system is applied free from voids
- Allow membrane to dry for min. 24 hours before tiling
- Up to 300mm in size – **BAL White Star Plus**
- Over 300mm in size (porcelain tiles) – **BAL Single Part Flexible** or **BAL Max-Flex Fibre**

NOTE: **BAL White Star Plus** will take a min. of 3 days to dry.

PREPARATION – Movement Joints: General

movement joints

Movement joints

Tiling stresses – causes and effects

Tiling can be affected by:

- stresses in the substrate including drying shrinkage, deflection and moisture movement
- thermal and moisture changes in the tiled area

This can result in tiles losing adhesion, bulging and/or cracking.

The solution

Movement joints, extending through the substrate, adhesive bed and tile finish, can counteract this problem. They should be placed wherever movement is likely to occur (*see opposite page 19*). Building designers should assess degree of stress likely and consider all factors including background type and bed.

Movement joints should be correctly formed according to requirements of **BS 5385**, parts 1–5.

BAL tips

making effective movement joints

Width

- To be sufficient to permit sealant to accommodate expected degree of movement

Fill

- Compressible back-up material*, topped up to final level with sealant
- Ideally, sealant should NOT bond to this back-up material as this would restrict sealant movement, increase stress, etc.
- Sealant should only adhere to opposing faces of joint, allowing it to compress/stretch more freely

Perimeter joints

- Min. 6mm in cross-section: fill with **BAL Micromax Sealant**
- For perimeter movement joints with porcelain and suitable natural stone in external applications, use MorTec Soft, a neutral curing sealant.

NOTE: Part of the BAL range, MorTec Soft Sealant can be used.

Intermediate joints

- If heavy-trafficked, may need to be filled with harder-wearing, more durable sealant type or suitable pre-formed strip

* e.g. cellular rubber/plastic, cellular polyethylene fibre boards. Alternatively, use bond-breaker material such as PTFE tape.

PREPARATION – Movement Joints: Internal/External

For interior WALL tiling

Install in accordance with **BS 5385-1** (clause **6.5.2**).

- Locate joints
 - Over existing and/or structural movement joints
 - Where tiling abuts other materials
 - Where tiling is continuous across junctions of different background materials
 - In large tiled areas, at internal vertical corners and at 3m–4.5m centres, both horizontally and vertically
 - Where stresses are likely to be concentrated (e.g. at changes of alignment)

Walls subject to significant thermal change or vibration

- Install movement joints at more frequent intervals

For exterior WALL tiling

Install in accordance with **BS 5385-2** (clause **10**).

- Locate joints
 - Over existing and/or structural movement joints
 - Where cladding abuts other materials
 - Where tiling is continuous across junctions of different background materials
 - At storey heights and approx. 3m–4.5m intervals vertically*
 - At external corners, vertically within 0.25m–1m from angle, and symmetrically where possible
 - Internal corners

* Ideally, locate over joints in structural background and at structural material changes (e.g. *horizontal*: top and bottom of floor slab; *vertical*: internal corners and at junctions with columns).

For interior/exterior FLOOR tiling

Install in accordance with **BS 5385-3** (clauses **6.8** and **7.1.6**).

- Locate joints
 - Over existing and/or structural movement joints
 - Around floor perimeter, and where tiling abuts columns, kerbs, steps and plant fixed to the base

Large floor areas

- Divide area to be tiled into bays with perimeter joints
- Max. size for each bay: 10m x 10m

Suspended floors

- Reduce bay size
- Provide additional joints over supporting walls or beams

External balconies or roof terraces

- Intermediate movement joints should be incorporated within the tile assembly at intervals not exceeding 3m

Floors subject to significant thermal change

- Divide into bays max. 40m² in area – with edge length max. 8m



APPLICATION – Equipment trowels/tools

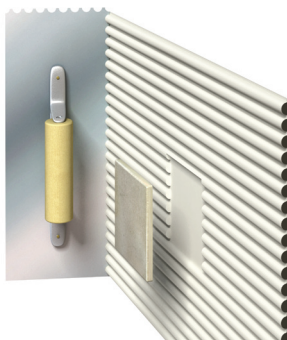
Get it right by ensuring you have the correct trowel for the job. It can often be vital to a successful installation.

In addition to trowels, and depending on the specific project task, other tools are typically required.

The BAL range also includes:

- Mixing Bucket
- Grout Float
- Gauging Trowel
- Hand Sponge
- Sponge Board
- Washboy

wall tiling



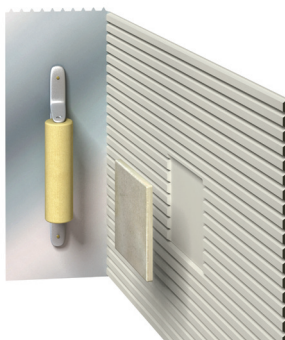
Round Notched Trowel

Edge profile: 6mm round notches at 12mm centres.

Coverage: approx. 70%.

Use for: thin-bed fixing, interior dry areas.

Tiles: most ceramics/marble/natural stone WALL tiles under 300mm in size.



Thin Bed Solid Bed Trowel

Edge profile: 10mm tapering notches, 5mm deep, at 12.5mm centres.

Coverage: approx. 100% at 2–3mm depth.

Use for: solid-bed fixing on all flat wall surfaces incl. interior wet areas and hygiene critical areas.

Tiles: most ceramics/marble/natural stone WALL tiles under 300mm in size.



A2 V Notched Trowel

Use for: BAL DPM and provided 200 microns for waterproofing and priming.

NOTE: The priming coat must be blinded with BAL Sand when tiling.



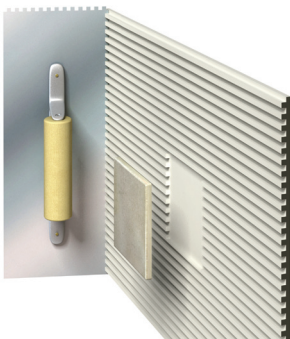
B2 V Notched Trowel

Use for: BAL DPM and provided 350 microns when used as a Damp Proof Membrane (DPM).

NOTE: When tiling, a priming coat of BAL DPM must be used with a A2 Trowel and blinded with BAL Sand.

APPLICATION – Equipment

wall/floor tiling



Mosaic Trowel

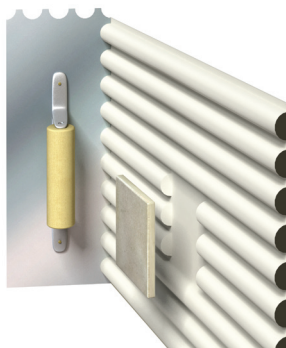
Edge profile: 4mm square notches at 8mm centres.

Coverage: approx. 90% to 100%.

Use for: thin-bed fixing.

Tiles: mosaics/WALL and FLOOR tiles up to 100x100mm and fixing uncoupling membranes e.g. BAL Rapid-Mat.

NOTE: Can be used to trowel out BAL Tank-It before using a floating trowel.



Thick Bed Solid Bed Trowel

Edge profile: 20mm round notches, 10mm deep, at 28mm centres.

Coverage: 100% achievable at 3–4mm bed depth.

Use for: solid-bed fixing.

Tiles: most WALL and FLOOR tile types (with recessed/keyed back patterns). Ideal for fixing large format wall tiles and up to 300mm floor tiles.

floor tiling

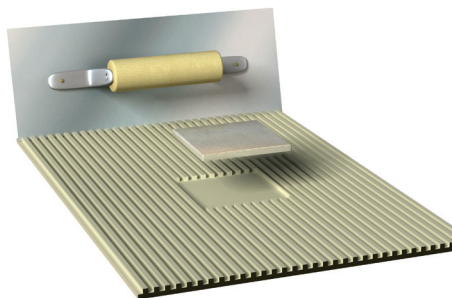
Solid Bed Tipped Trowel

Edge profile: 5mm notches at 6mm centres – with 3mm protruding tips above notches to ensure 4mm solid bed.

Coverage: approx. 100%.

Use for: BAL Single Part Fastflex.

Tiles: most FLOOR tiles.



Large Format Trowel

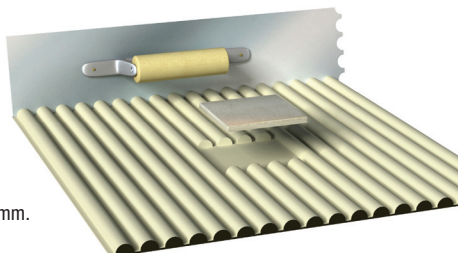
Edge profile: 20mm round notches, 13mm deep, at 28mm centres.

Coverage: approx. 100%.

Use for: fixing larger tiles.

Tiles: FLOOR tiles over 300x300mm.

Use for: BAL Pourable One/ BAL PTB Fibre Plus.



APPLICATION – Mixing mixing

IMPORTANT: These are general mixing notes only – see individual product packs for specific mixing instructions.

General

- All BAL packs (except ready-mixed products) provide:
 - detailed mixing instructions
 - pot life/working times at typical ambient temperature (20°C)

Mixing most* powdered adhesives and grouts

- Mix powder with clean, cold water in the proportions shown until a smooth paste is achieved
- If using an electric drill mixer, blend at slow speed. *Do NOT exceed 300rpm*
- For *cementitious adhesives and grouts*, wait 2–3 minutes, then briefly mix again. *Do NOT entrain air by mixing at too high speed or over-mixing. NEVER add extra water to mixed adhesive or grout: this would reduce final strength.*

For further information see the latest version of the BAL Technical Data Sheet.

* NOT applicable to 2-part or 3-part epoxy grouts.

Mixing of Two and Three Part Epoxy grouts/DPM coating

- The individual components should be thoroughly stirred before being mixed together.
- The entire contents of the hardener/filler container should be poured into the resin container and the two/three materials mixed thoroughly for at least 3 minutes using a heavy duty slow speed drill and spiral paddle.
- Some of the mixed components should be re-introduced back into the used containers in order to activate any residue and then pour back into the large mixing vessel and re-mix for 30 seconds.

NOTE: Mixing in this way will ensure product consistency and also that any resin or hardener that remains in the containers after application will cure to allow for easier waste disposal.

Health & Safety

When using BAL products, ensure you have read and understood the Health & Safety Warning associated with each

BAL tips

temperature and working time

Remember to allow for variance in mixed product working time/pot life if the ambient temperature is significantly above or below 20°C.

- **Higher** temperatures = **shorter** working time
- **Lower** temperatures = **longer** working time

grouting in more demanding situations

If using these products for grouting in especially demanding situations (EXAMPLE: tiling to single layer timber floors/walls), **BAL Admix GT1** should be diluted 1:1 by volume with water – **BAL Wide Joint Grout**, or 1:2 by volume with water – **BAL Micromax2 Grout**.

Mixing admixtures

The diluted admixture should replace an equivalent volume of the required water in mixing the product.

For adhesives

- **BAL Admix AD1** may be added, diluted 1:1 by volume with water, to:
 - **BAL CTF4**
 - **BAL Rapidset**
 - **BAL Supercover Rapidset**
- **BAL Admix AD1** may be added, diluted 1:3 by volume with water, to:
 - **BAL Rapid Flex One**
 - **BAL Pourable One**
 - **BAL PTB Fibre Plus**

For grouts

- **BAL Admix GT1** may be added, diluted 1:2 by volume with water, to:
 - **BAL Grout**
 - **BAL Wide Joint Grout**
 - **BAL Micromax2 Grout**

For single layer timber floors/walls

- **BAL Admix GT1** may be added to:
 - **BAL Grout** (1:1 with water)
 - **BAL Wide Joint Grout** (1:1 with water)
 - **BAL Micromax2** (1:2 with water)

product concerned. *Panels giving statutory advice and describing Best Practice precautions are included on every pack.*

APPLICATION – Usage

usage

IMPORTANT: These are general usage notes only – see individual product packs for specific application instructions/usage information. Or, if you require more detailed advice and guidance, contact the BAL Technical Advisory Service.

General

All packs carry instructions for use, including recommended trowel type(s) and other tools to be used for application.

As a general rule, do NOT apply BAL adhesives or grouts in temperatures below 5°C.

Good practice: applying adhesives

- When using adhesive, apply max. 1m² at a time. When using BAL adhesives with FST, longer open time can be achieved.
- Ensure ribs all run in same direction
- Fix tiles before adhesive forms skin (typically 20–30 minutes) dependant upon the BAL tile adhesive. If skin has formed, remove adhesive and apply fresh layer

BAL tips

fixing light natural stone

Certain types of natural stone (e.g. limestone, travertine and some granite) may be susceptible to water staining. Recommendation, if fixing such materials: use a BAL rapid-setting **white** adhesive (excluding Supercover Rapid Flex or BAL Single Part Fastflex).

Good practice: applying grouts

- When grouting, work in small areas, using a grout float or squeegee
- Completely fill tile joints, and compact well, ensuring no voids
- Allow grout to dry for approx. 15 minutes before cleaning tile surfaces dependent upon temperature

BAL tips

checking laid tiles

Occasionally lift a tile to check the adhesive contact area. There should be no voids in solid bed fixing. In wet duty or external installations, water can accumulate in voids which can be detrimental. In the case of external tiling, damage can occur on freezing. For **floors**, a hidden void could lead to tiles cracking under loading. Insufficient adhesive contact for **wall** tiles could reduce its capacity to carry the tiles' weight, and cause them to slip or fall.

Coverage

The **BAL PRODUCT SELECTION GUIDE**, and all BAL adhesive, grout and ancillary product packs carry typical guidance to indicate coverage in normal use.

This is stated for *the full pack quantity concerned* – with assumed dimensions stated in each case:

- **For adhesives:** assumed thickness of the adhesive bed
- **For grouts:** assumed size(s) of the tiles PLUS width of the joint

Where applicable, typical coverage is given for different applications/usage circumstances.

Important timings after installation

Once completed, installations are subject to minimum periods before tiled areas may be used under normal service conditions:

- **Shower installation:** must NOT be used for at least 2 weeks (as required by **BS 5385-4**)
- **Swimming pool installation:** must NOT be filled for at least 3 weeks after grouting
- **Floor tile installation:** wait minimum 24 hours before allowing normal trafficking
- **Underfloor heated tile installation:** heating should NOT be switched on for min. 2 weeks (*see manufacturer's guidelines*)

BAL tips

when grouting porous tiles and some natural stone

Before grouting, check for any risk of tiles staining by applying grout to small trial areas of tile. If discolouration occurs, or removal of grout from the surface seems

difficult, apply **BAL Protective Sealer** – and repeat the trial. The sealer will protect the tile surface and help prevent staining until after grouting is complete.




red sky thinking

**BAL External Tiling
Solutions**

**Expand your horizons
and satisfy the demand
for external tiling.**

With growing demand
for inside/outside living
develop your customer
offer with problem-free
balconies, roof terraces
and ground terraces
using Gutjahr System
Technology from BAL
– market leaders in full
tiling solutions.

GUTJAHR  **SYSTEM TECHNOLOGY**
exclusively from **BAL**

YOU +  BAL

bal-adhesives.com



@BALtiling



BALtiling



Innovative technology and market-leading support

Gutjahr System Technology from BAL is specifically designed to protect external tiles on balconies, terraces and patios from rain, frost and heat.

If water penetrates below external ceramic, porcelain or natural stone tiling and cannot drain away quickly enough, long-term problems such as frost damage, efflorescence, natural stone staining, warping or even weed growth may occur.

BAL's new system takes away these problems by providing rapid, permanent drainage of the covering structure utilising innovative drainage mats, drain grates, drip/drain edge profiles, and guttering systems.

- Easy to install
- Part of a full system solution for tiling including waterproofing, uncoupling, drainage, adhesives, grouts and sealants
- Simple, safe and strong solutions for new builds and renovations
- Market-leading guarantee
- On-call, on-line and on-site project support
- Industry-leading technical advice

Up-skill with free BAL training

Want another string to your bow?

Get free installation training on our External Tiling Solutions at our state-of-the-art Innovation & Technology Centre in Stoke-on-Trent.

Enjoy hands-on training, practical demonstrations and theoretical presentations to equip you with all the skills needed to install long-term, problem-free tiling on balconies, roof terraces and ground terraces.

request free training

Call: 01782 591120

Email: training@building-adhesives.com

www.bal-adhesives.com

APPLICATION – Frequent Questions

the top ten questions

Among 50,000+ queries handled annually by the BAL Technical Advisory Service, these are some of the most commonly asked questions – and a summary of the answers:

Q Should plaster walls be primed before tiling?

A Yes. *If using BAL cement-based powdered adhesives*, apply 2 coats of neat **BAL Prime APD** or **BAL Primer** or 2 coats of **BAL Bond SBR** diluted 1:2 with water.

If using BAL ready-mixed adhesives, priming is not necessary UNLESS the plaster is very shiny i.e. highly polished and dusty. If so, brush surface with a stiff bristle brush and prime with **BAL Prime APD** or **BAL Primer** diluted 1:1 with water or **BAL Bond SBR** diluted 1:4 with water.

Q Why have cracks appeared in grout joints?

A Possible reasons:

- Deflection in the substrate
- Moisture expansion in underlying boards that are not water resistant
- Tiles not adequately bonded to substrate
- Grout joints wider than max. recommended width for grout product concerned – resulting in drying shrinkage
- Joints not fully filled, leaving voids underneath grout – so grout not supported.

*To increase flexural and (at tile edges) adhesion strength, and reduce water permeability, use **BAL Admix GT1** (see page 22) or use a BAL epoxy resin-based grout.*

Q How to tile over heated screed?

A *See page 15 for base preparation details.*

Then fix tiles with 3–6mm bed of **BAL Single Part Flexible**, **BAL Max-Flex Fibre**, **BAL Rapid Flex One**, **BAL Rapid-Flex Fibre Plus** or **BAL Supercover Rapid Flex**. When dry, grout with (min. 3mm joint) **BAL Superflex Wide Joint Grout** – or **BAL Wide Joint Grout** with addition of **BAL Admix GT1** (diluted 1:2 by volume with water) or **BAL Micromax2 Grout**.

Q Can 600x300 mm ceramic or porcelain tile be fixed to plasterboard wall with ready-mixed adhesive?

A Not advisable. Porcelain tiles have extremely low porosity. Ready-mixed adhesives rely on water loss through the joints, background substrate or tile to achieve full bonding. As the tiles have low porosity and joints are reduced due to the large tile size, ready mix products struggle to set. Use highly polymer-modified adhesive such as **BAL Single Part Flexible**, **BAL Max-Flex Fibre**, **BAL Rapid Flex One**, **BAL Rapid-Flex Fibre Plus** or **BAL Supercover Rapid Flex**. These set via a chemical reaction. If required prime the plasterboard with neat **BAL Prime APD** or **BAL Primer**.

Q Are there weight restrictions when tiling onto plaster?

A Yes (*See page 6*). As a general rule, remember to allow approx. 2-4kg/m² for weight of adhesive and grouts in addition to the weight of tiles.

Q How to fix ceramic or porcelain tiles to calcium sulphate/anhydrite-based screed?

A *See page 11 for base preparation details.*

Protect floor against water ingress (moisture content must be <0.5% by weight or <75% relative humidity before tiling may begin. Measure moisture by hair hygrometer 75% RH or CM tester ('speedy moisture tester') or oven drying @40°C.

Prime with 2 coats. First coat diluted 1:1 with water and second coat neat, using **BAL Prime APD** or **BAL Primer** and allow to dry.

Then fix tiles with **BAL Single Part Flexible**, **BAL Max-Flex Fibre**, **BAL Rapid Flex One**, **BAL Rapid-Flex Fibre Plus**, **BAL Supercover Rapid Flex**, **BAL PTB Fibre Plus** or **BAL Pourable One** or, if incorporating underfloor heating, level using **BAL Level Max** or **BAL Acrybase**.

APPLICATION – Frequent Questions

Q How long should cement:sand screed be left before tiling?

- A 3 weeks for Portland cement (including 7 days cure + 2 weeks continuous drying out in air) or 4 hours for screeds incorporating **BAL Quickset Cement**.

*If not possible to allow Portland cement:sand screed to dry for 3 weeks, allow min. 24 hours for drying, then tile using **BAL New Floor**.*

Q What is the best tile and grout for travertine tiles?

- A To avoid discolouration on travertine, limestone or other light-coloured stone, the adhesive should be a **white** cement-based adhesive.

Also, to avoid staining use a rapid-setting adhesive. Ideal choices are **BAL Rapid Flex One** or **BAL Rapid-Flex Fibre Plus** for walls and **BAL Pourable One** or **BAL PTB Fibre Plus** for floors.

Lay tiles with 3–6mm solid bed onto floors. *Do NOT spot fix, as this may result in shading.*

To avoid migration of materials in solution into the travertine stone, use a grout colour similar to that of the tiles.

*To avoid 'picture-framing' effects on very porous stone, seal surface using a suitable sealer. The risk may be further reduced by using a rapid setting and drying cement based grout. **BAL Superflex Grout**, **BAL Wide Joint Grout**, and **BAL Superflex Wide Joint Grout** are all suitable for use with some natural stone.*

Use a rapid-setting grout such as **BAL Micromax2 Grout**.

Q Can timber floors be tiled?

- A Yes – provided that they are capable of carrying the additional load, and are sufficiently stiff. To provide extra rigidity, noggings should be fitted between joists, as recommended in **BS 5385-3**.

Alternatively, fix WBP plywood (min. 15mm thick) over existing boards. Check that there is adequate ventilation and a damp-proof course.

Alternatively for timber floors which are free from deflection, overlay with a suitable tile backing board e.g. **BAL Board**.

See pages 13 and 15 for details of base preparation of timber floors – including those with and without an overlay.

*For softwood tongue and groove floorboards, if direct fixing is possible, remove all traces of previous finishes (stain, varnish) before tiling. Lay a solid bed of **BAL Single Part Fastflex**, ideally 3–4mm thick.*

If fixing to an overlaid timber floor, lay a solid bed of **BAL Single Part Flexible Adhesive**, **BAL Max-Flex Fibre**, **BAL Rapid Flex One**, **BAL Rapid-Flex Fibre Plus** or **BAL Supercover Rapid Flex**, ensuring NO voids left underneath tiles.

Q What's needed when tiling a wet room?

- A Above all, make sure the walls/floor are suitable for exposure to moisture. They should be waterproofed/tanked with **BAL Tank-It** (see page 16) or **BAL Waterproofing Kit for Showers** (see page 17).

BAL Waterproofing Kit for Showers will support a weight of tiling + adhesives + grout or up to **32kg/m²**.

Use adhesives suitable for the tile type and substrate. All **BAL** dispersion (ready-mixed) and cement-based adhesives are compatible with **BAL Waterproofing Kit for Showers** and **BAL Tank-It**.

If a power shower is being installed, check that the chosen adhesive is suitable.

Grout: *If single-head showers (including power showers), **BAL Superflex Grout**, **BAL Microflex Grout**, **BAL Superflex Wide Joint Grout** and **BAL Micromax2** are suitable.*

*If multi-head shower and body jets, use **BAL Easy epoxy AG**.*

PROFESSIONAL SUPPORT SERVICES

Web and Powerspec

BAL-Adhesives.com – information and advice at your fingertips

New and improved, **www.bal-adhesives.com** brings together the best of BAL on the web (including Tilerworld.com, tilers-demand.com and see-it-for-yourself.com) with exclusive features and benefits for tilers, contractors, specifiers, homeowners or trainees.

Log-in today for:

- Full information about BAL products and services
- Downloadable literature including Technical Data Sheets, Material Safety Data Sheets, tip sheets, products guides and case studies.
- Improved stockist locator – find branch directions, promotions, information
- Find a Trusted Tiler tool and review a tiler facility
- On-line technical advice
- Training guides and course information

Sector specific business development tools:

Tilers

- Build your own web profile and showcase your work, experience and qualifications
- Generate homeowner leads and quote for work

Homeowners

- Find a trusted tiler, review tiler work and get the chance to win back the cost of your tiling job!
- Get inspiration, tips and advice
- Access retail promotions

Contractors

- Get M40 specification support
- Find an Apprentice with our unique tool

Trainees

- Exclusive training guides and development materials and access to connect with contractors to find apprenticeships.

Specifiers

- Link to BAL BIM objects on the NBS National BIM Library
- Get FREE instant M40/M20 specs
- Request CPDs
- Get FREE tile sample testings

Powerspec: on-line selection & specification

Selecting the right tile adhesive or grout for your next project is important – but it needn't be complex or time-consuming.

BAL Powerspec is designed for everyone who has to decide or advise which products are needed for a specific task: including Tile Fixers, Contractors, Architects, Specifiers and BAL Stockists.

It incorporates:

- Easy selection tool – always available with fast accurate information
- Latest technical, safety and product data
- Instant NBS M40 specifications



POWERSPEC

www.powerspeconline.com

PROFESSIONAL SUPPORT SERVICES

BAL training

BAL Training – Getting fully qualified

At BAL we believe that quality workmanship is just as important as high quality products, which is why training is at the top of our agenda. In 1992, we became the first tile adhesive manufacturer to open a

training centre for standards and tile fixing techniques, while we enhanced our training offer with the opening of our state-of-the-art Innovation and Technology Centre at our Stoke-on-Trent HQ in 2015.

Training Courses tailored for you

Building on more than 20 years of training heritage, we offer a full range of day courses providing practical and theoretical training for fixers, apprentices, students, distributors and specifiers.

We offer a flexible approach to learning, from one-day to five-day courses, while you can also pick and choose your modules with our bespoke training option.

As well as in-house training, we also offer training on-site and at our regional centres, while we work extensively with colleges and retailers around the country supporting Diploma-level qualifications.

Our training courses are endorsed by The Tile Association (TTA) and the Construction Industry Training Board (CITB) and have been highly commended by the National Training Association (NTA).

BAL Training - Booking a course

Find out more about our latest training courses by visiting www.bal-adhesives.com

To find out about our range of training courses, book a date, or speak to our training manager:

Email: training@bal-adhesives.com

Tel: 01782 591120/ 01782 591100

Web: www.bal-adhesives.com

Innovation and Technology Centre

Opened in March 2015, **BAL's Innovation and Technology Centre (ITC)** leads the way in training and development in the tiling sector.

Designed to the highest specification, the ITC features interactive technology, a demonstration auditorium that can seat more than 40 delegates, six practical training bays and meeting rooms.

BAL Technical Advisory Service

The expertise behind the trusted BAL range of tiling adhesives and grouts is also always on hand to support professional fixers.

The **BAL Technical Advisory and Specification Service** handles approx 50,000 queries annually – providing FREE assistance, advice and specifications for all aspects of ceramic tiling installations.

In addition, a nationwide team of **BAL Product Support Technicians** are available to offer practical knowledge and on-site advice and training.

Call

0845 600 1222

(Calls to this number are charged at local rate)

Alternatively, fax your enquiry to **01782 591121**

BUILDING ADHESIVES LTD

Longton Road, Trentham
Stoke-on-Trent, ST4 8JB, England
www.bal-adhesives.com

Sales

Tel: +44 (0) 1782 591160

Fax: +44 (0) 1782 591131

Technical/Training

Tel: +44 (0) 1782 591120 or

Tel: +44 (0) 845 600 1 222

Fax: +44 (0) 1782 591121

Unit 622, Phase III,
Northwest Business Park,
Ballycoolin, Dublin 15, Ireland

Tel: +353 (0) 1 880 9210

Fax: +353 (0) 1 880 9211

Email: info@building-adhesives.com



POWERSPEC

www.powerspeconline.com

Note: The customer must verify the suitability of any information, opinion, recommendation or advice ("Information") provided by the Company for the particular application for which any goods are intended to be used and the Company accepts no liability (whether in contract, tort or otherwise) whatsoever for any loss, damage or expense arising from the misuse of any Information it supplies nor for the use of any Information in or for applications which are unsuitable or inappropriate. Building Adhesives Limited operates a continuous research and development programme and reserves the right to alter or to update Information from time to time.

Microban and the Microban symbol are trademarks of the Microban Products Company, Huntersville, NC

© Copyright Building Adhesives Limited 2015

PorcelBond Plus™ is a trademark of Building Adhesives Ltd.

BAL3950216 JANUARY 2017

YOU + BAL

bal-adhesives.com



@BALtilling



BALtilling



in